

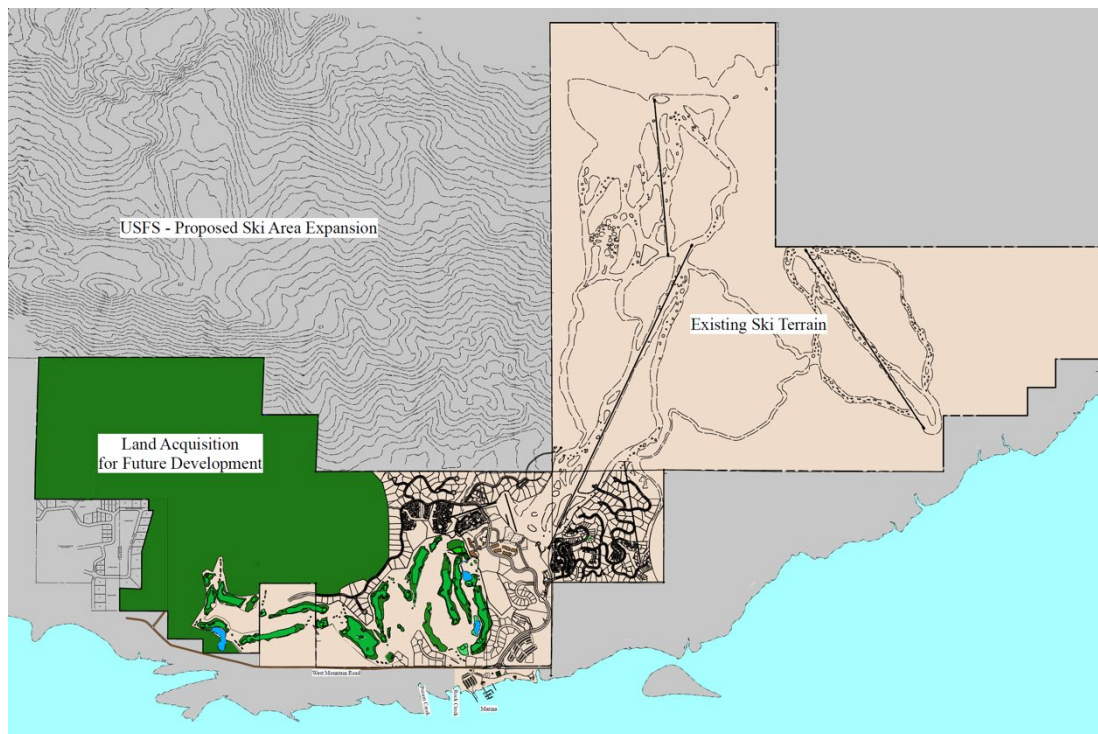


Media Contact:  
Beth Bowman  
208-315-1756  
[bbowman@tamarackidaho.com](mailto:bbowman@tamarackidaho.com)

## Tamarack Resort Doubles Developable Acreage Through Adjacent Land Acquisition

*Acquisition reinforces ownership's commitment to completion of the resort master plan*

**TAMARACK**, Idaho (October 28, 2024) — Tamarack Resort announced today it has acquired more than 500 acres of prime development land contiguous to the resort. The acquisition of the land expands Tamarack's land real estate development holdings by approximately 800 acres, as it connects to 300 acres Tamarack has acquired since 2019, which were previously non-contiguous.



Green shows land acquisition for future real estate development.  
Tan shows existing ski, golf and real estate development (existing golf course shown in green)



Future development will feature a mix of residential units that blend seamlessly with the surrounding natural beauty. The newly acquired land lies just below Tamarack’s proposed mountain expansion, offering future direct access to the slopes. Tamarack intends to develop approximately 700 additional residential units in this area including many that will have coveted ski-in/ski-out access.

“This acquisition underscores Tamarack’s commitment to completing its master development plan for America’s only ski, golf, and lake resort and becoming the nation’s premier four-season resort” said Scott Turlington, President of Tamarack Resort.

The acquisition comes on the heels of Tamarack being ranked #26 in Conde Nast’s Top 30 Ski Resorts in the U.S., the grand opening of its Robert Trent Jones II-designed Championship golf course, and Tamarack’s new flagship Mid-Mountain Lodge, a 12,000 square foot state-of-the-art on-mountain lodge that will open in December 2024. Positioned at the top of the Tamarack Express at mid mountain, the lodge will serve as a dining venue and event center, and includes a private wing for members of The Club at Tamarack.

###

### **About Tamarack Resort**

Tamarack Resort is America’s only ski, golf, and lake resort. The independent, all-season destination is situated on 3,600 acres, located 90 miles north of Boise, Idaho. Within its master-planned community, Tamarack offers recreation, real estate, vacation rentals, event space, and a vibrant alpine-style village. The winter brings 2,800 feet of vertical on 1,530 acres of skiable terrain in addition to Nordic and snowshoe trails. In the summer, the resort is home to golf, mountain biking, ziplining, hiking, rafting, and watersports on Lake Cascade. For more information on recreation, accommodations and real estate, visit [tamarackidaho.com](http://tamarackidaho.com)