

COME HOME TO

CALVI



EXCLUSIVELY LISTED BY

TAMARACK
REALTY



THE LUXURY OF YOUR OWN

3,600-ACRE BACKYARD.

At Tamarack Resort, the old hallmarks of luxury have given way to new intangibles such as time, relationships, connections with the outside world, and comfort. Within this 3,600-acre wondrous destination filled with everything from ski slopes to lake life, mountain trails and magnificent views, we're continually evolving a family-centric lifestyle that you can embrace through residence ownership. It's a place that's both new and familiar where you will feel connected and grateful to return to - season after season, year after year.

THE LUXURY OF LIVING IN THE

THE HEART OF IT ALL.

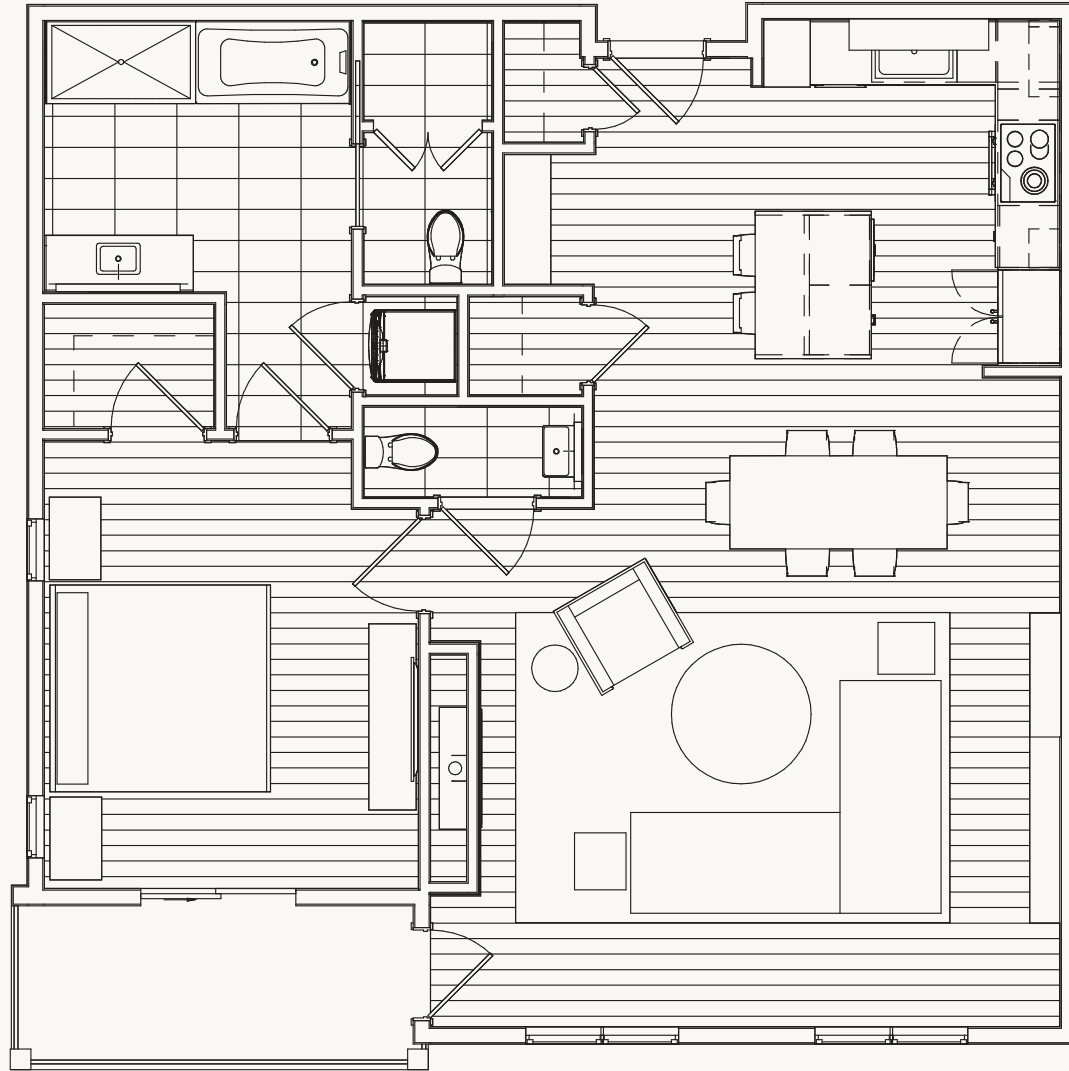
The Village at Tamarack is a pedestrian-friendly, alpine-style village setting that is located in the heart of Tamarack Resort and is home to Calvi. The Village acts as the bustling town square of the resort and is just steps from your front door. It's the perfect spot to both engage and unwind.

Offering 37 thoughtfully designed, fully-furnished residences, Calvi is home to the last remaining snow-front units in The Village. It features an assortment of well-crafted floorplans designed to help you and your family enjoy The Village, the resort, and each other all four seasons of the year. To own a Calvi residence means that any and every adventure at Tamarack is never more than a few steps from your front door.



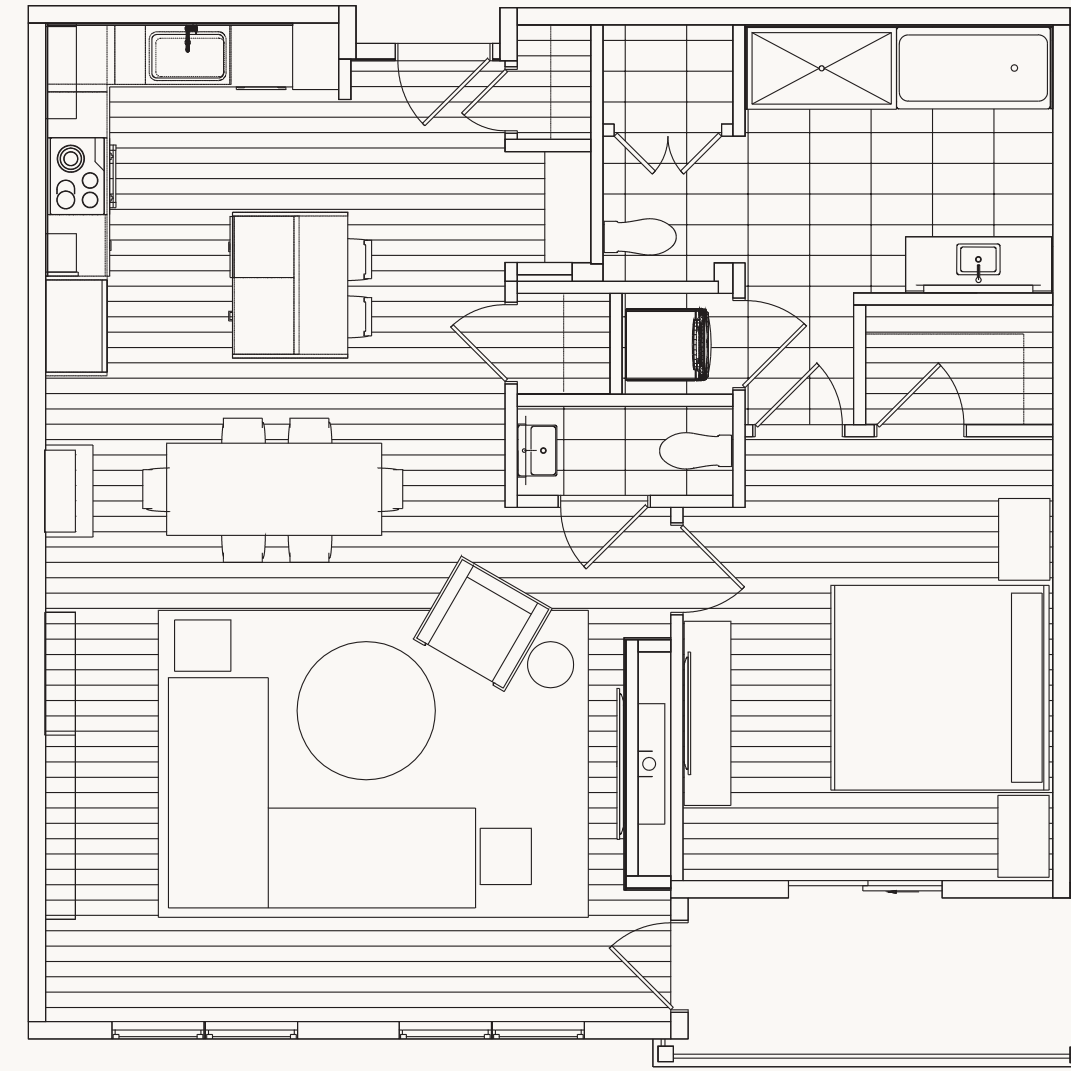
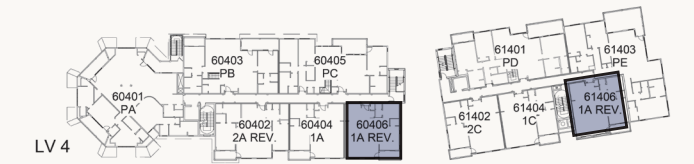
CALVI – FLOORPLAN 1A

ONE BEDROOM | 997-1,000 SQUARE FEET

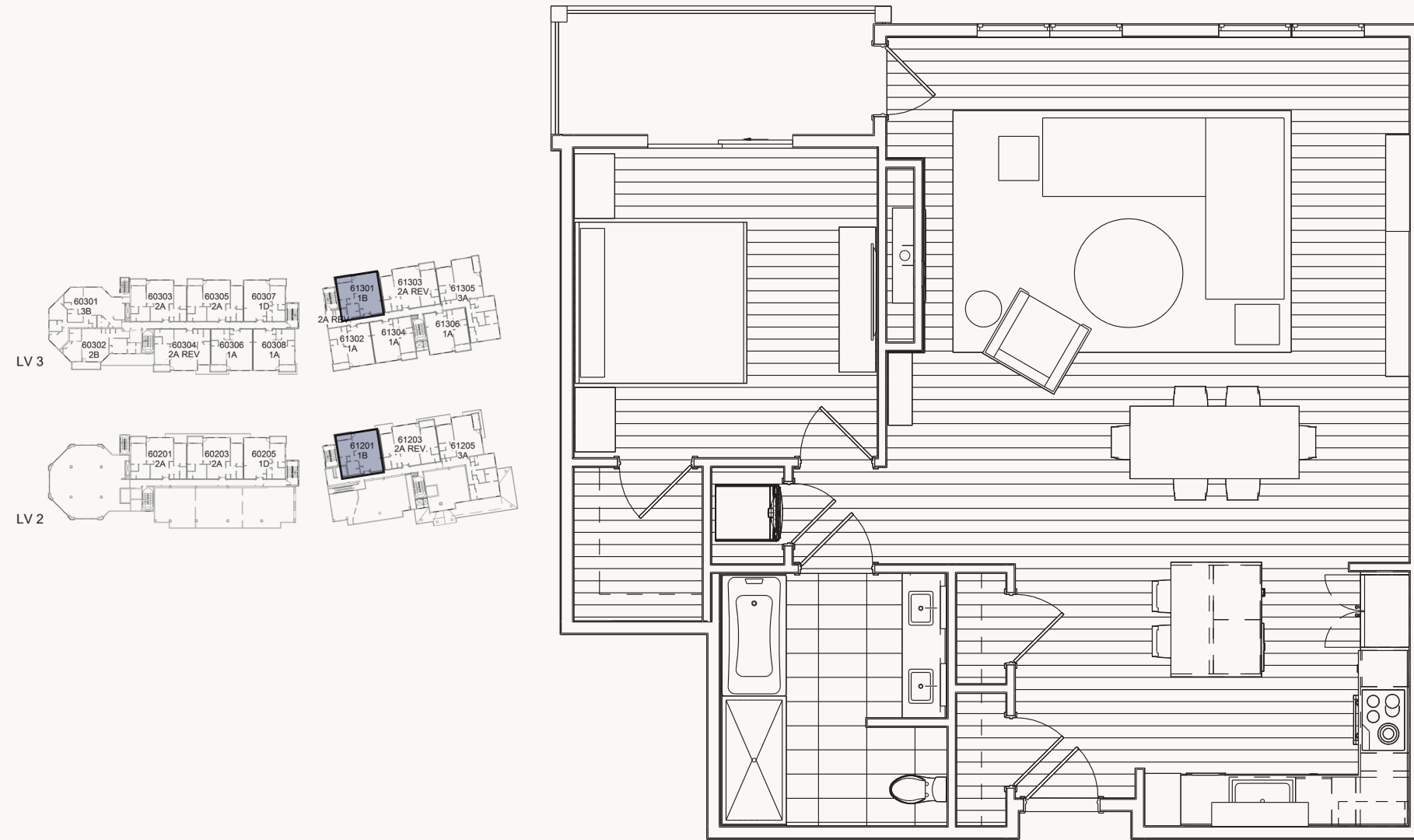


CALVI – FLOORPLAN 1A REVERSE

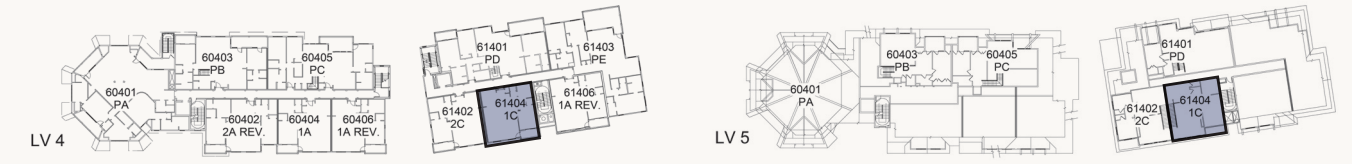
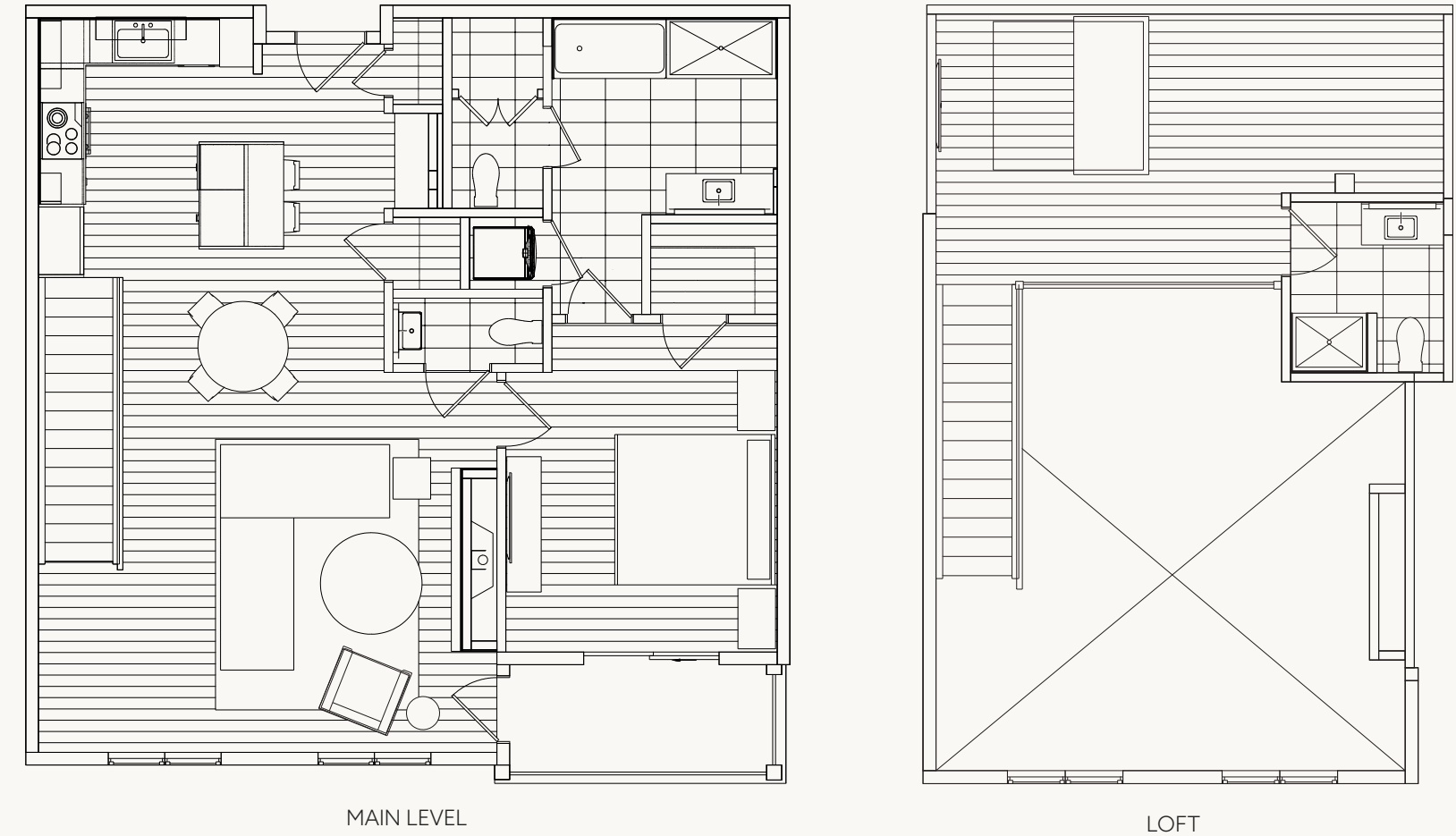
ONE BEDROOM | 997 SQUARE FEET



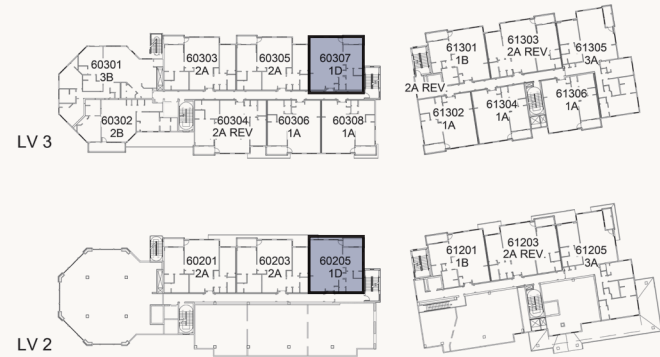
CALVI – FLOORPLAN 1B
 ONE BEDROOM | 1,000-1,006 SQUARE FEET



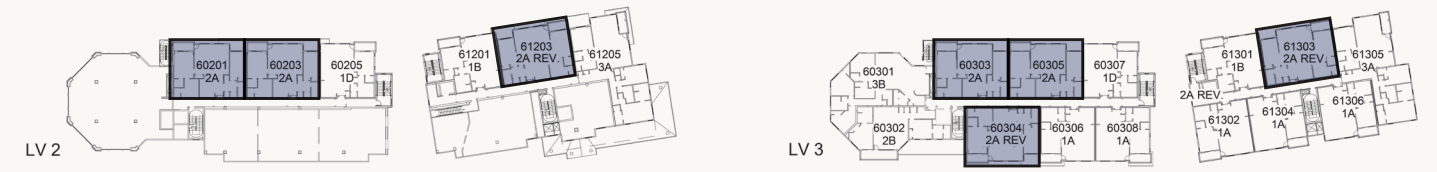
CALVI – FLOORPLAN 1C
 ONE BEDROOM WITH LOFT | 1,243 SQUARE FEET



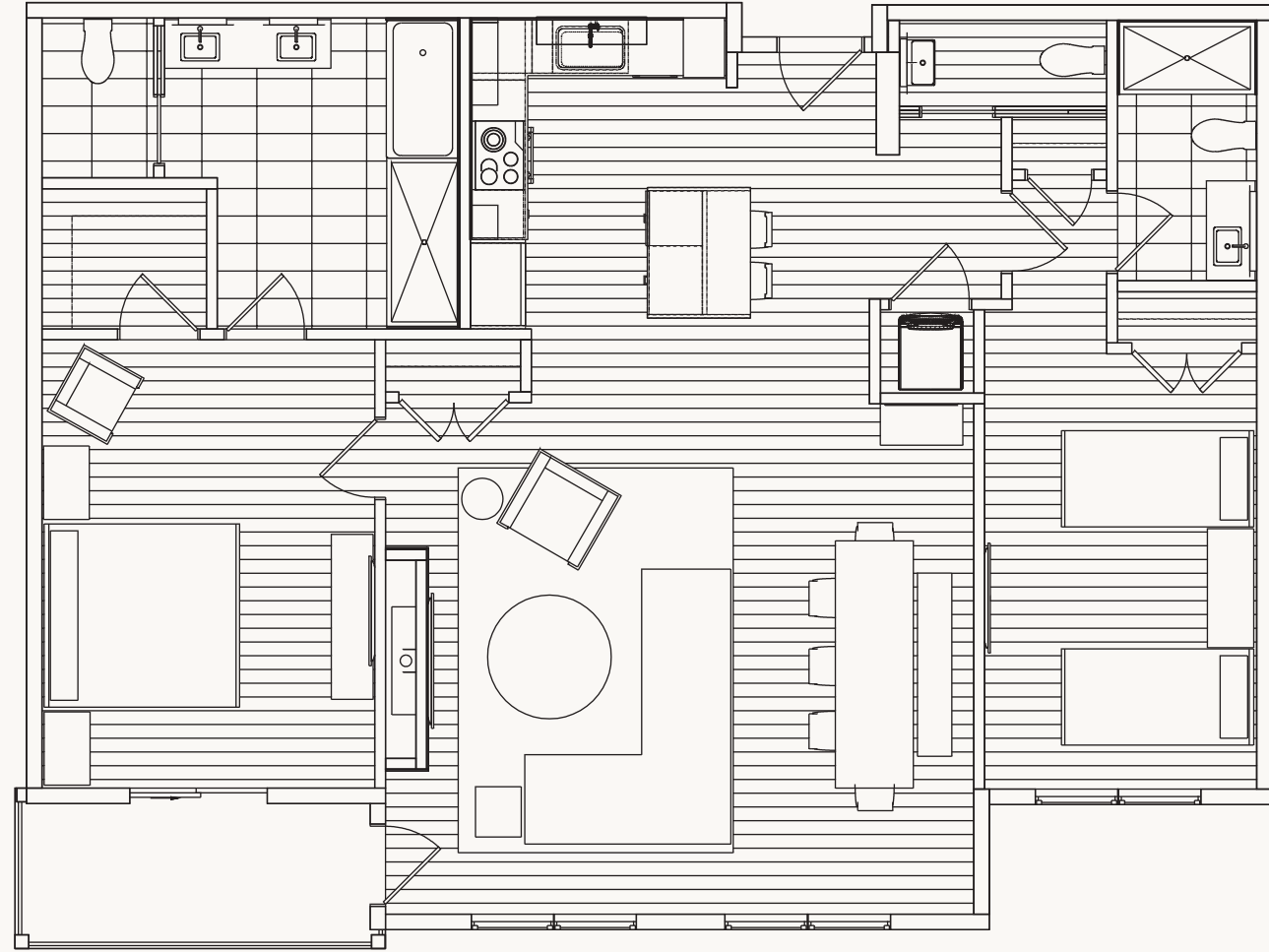
CALVI – FLOORPLAN 1D
ONE BEDROOM | 997 SQUARE FEET



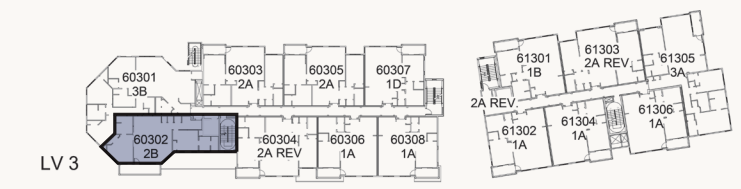
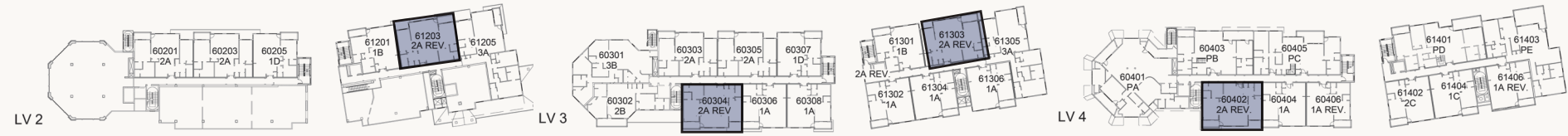
CALVI – FLOORPLAN 2A
TWO BEDROOM | 1,305 TO 1,309 SQUARE FEET



CALVI – FLOORPLAN 2A REVERSE
TWO BEDROOM | 1,305 SQUARE FEET



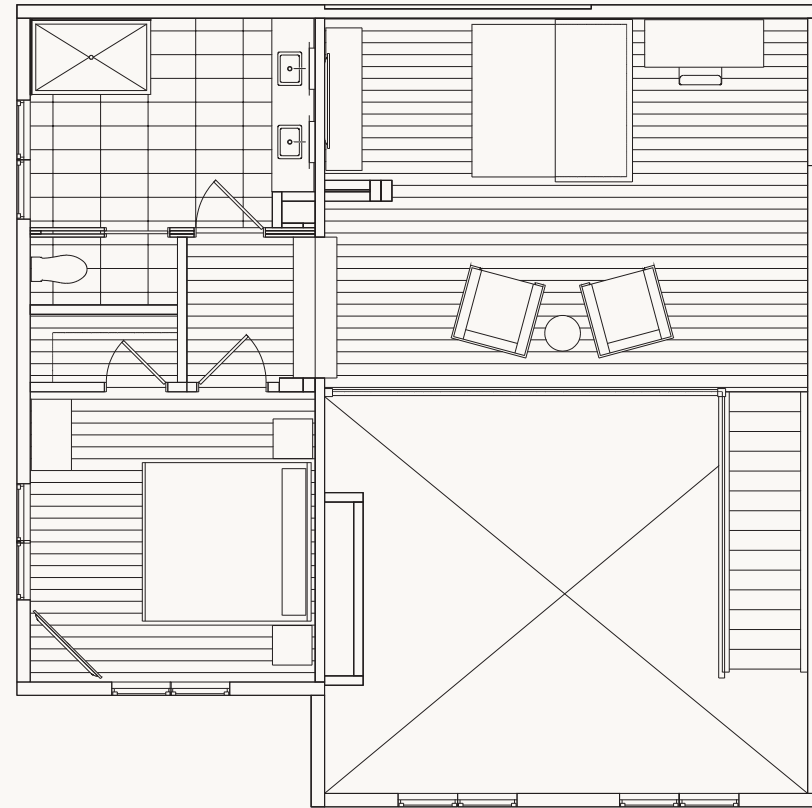
CALVI – FLOORPLAN 2B
TWO BEDROOM | 1,221 SQUARE FEET



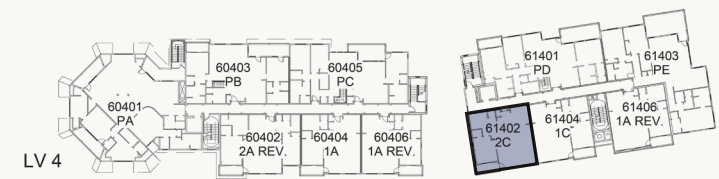
CALVI – FLOORPLAN 2C
TWO BEDROOM WITH LOFT | 1,662 SQUARE FEET



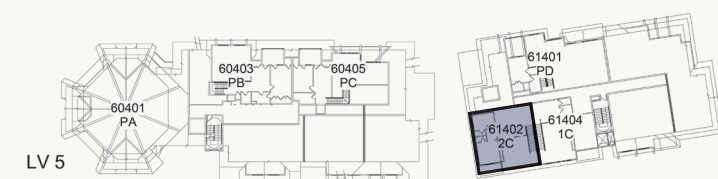
MAIN LEVEL



LOFT

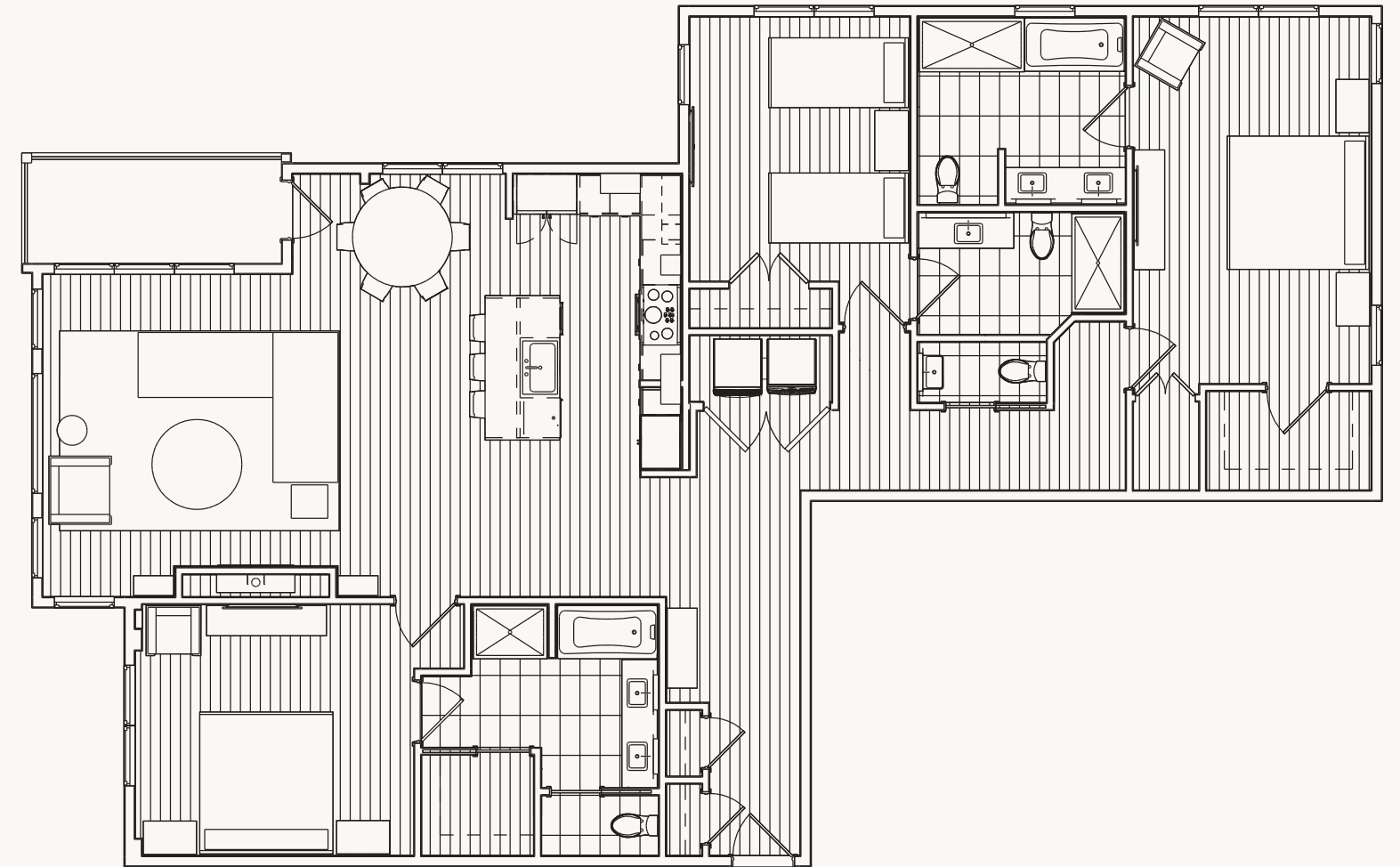


LV 4

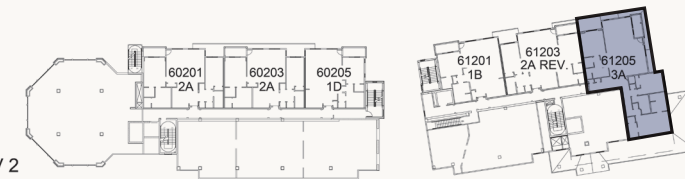


LV 5

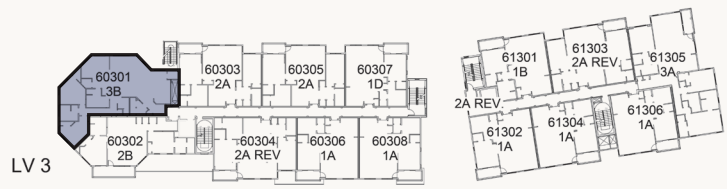
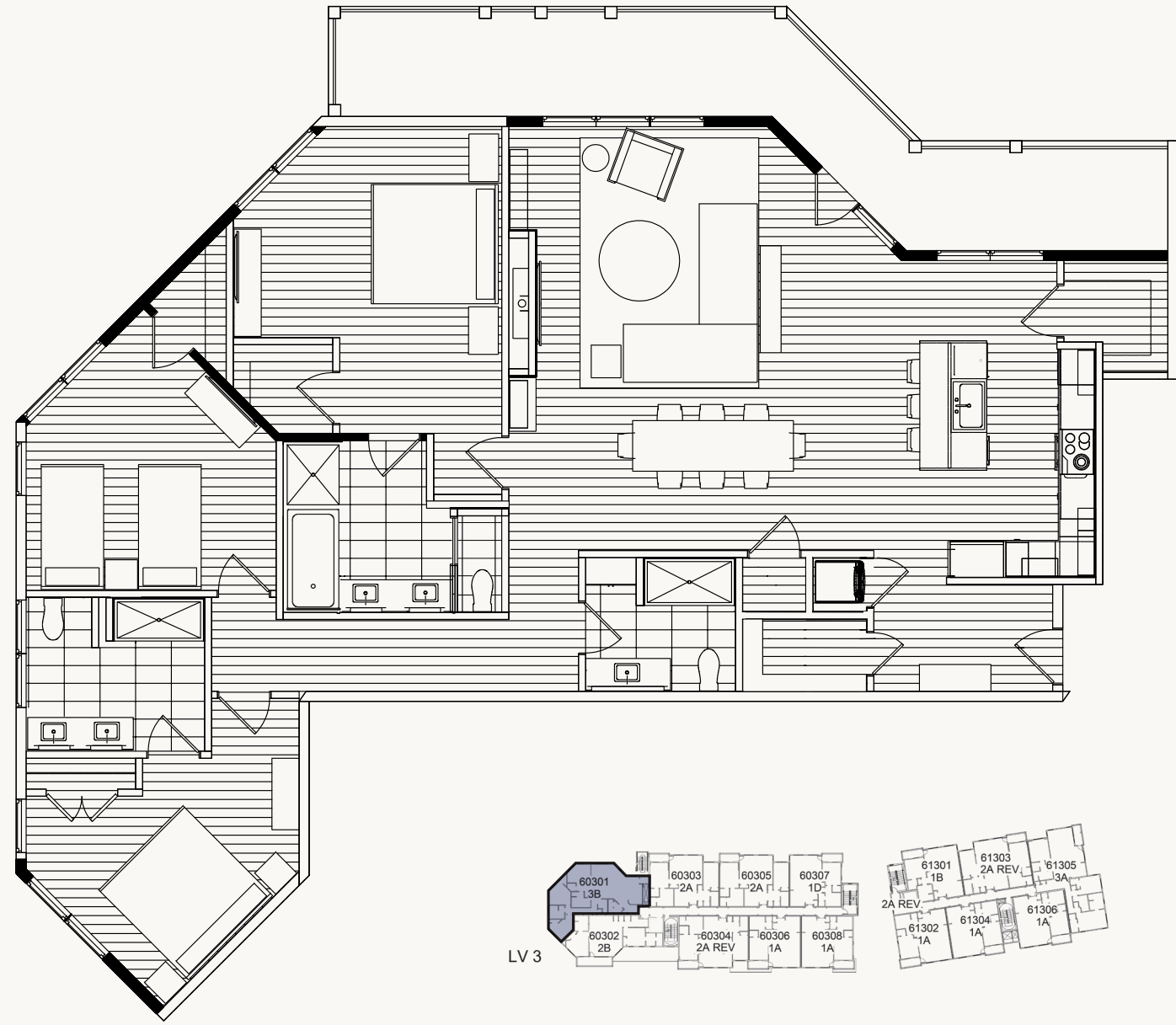
CALVI – FLOORPLAN 3A
THREE BEDROOM | 1,888 TO 1,896 SQUARE FEET



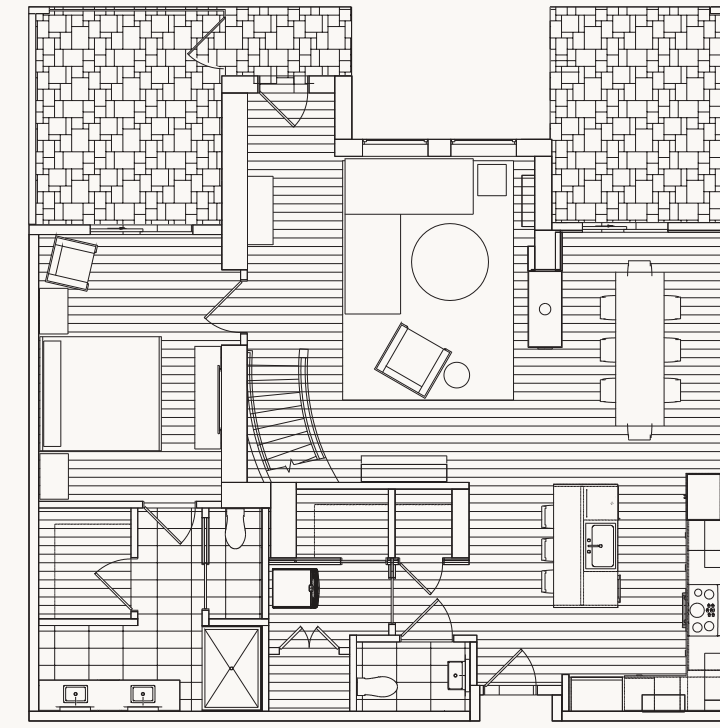
LV 2



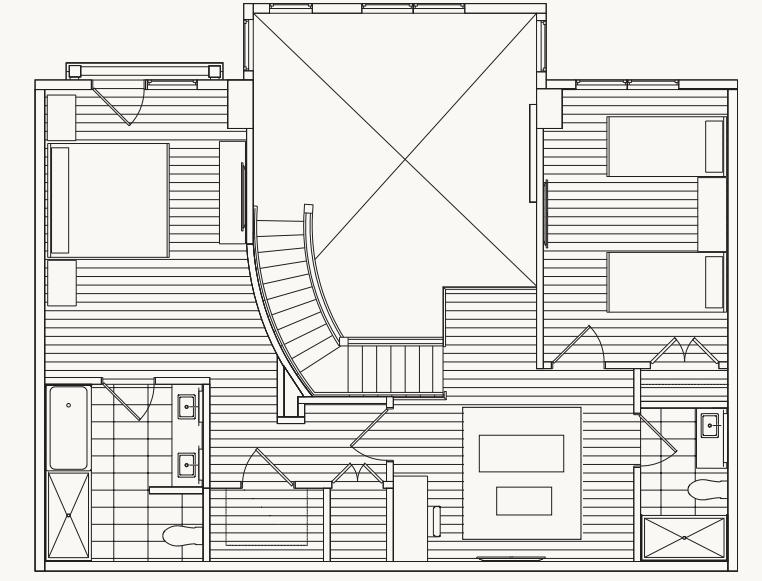
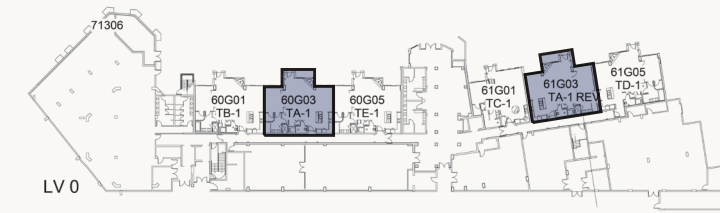
CALVI – FLOORPLAN 3B
 THREE BEDROOM | 1,869 SQUARE FEET



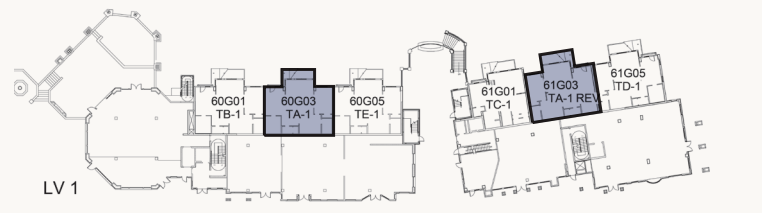
CALVI – FLOORPLAN TA
 THREE BEDROOM WITH LOFT | 2,052 SQUARE FEET



MAIN LEVEL

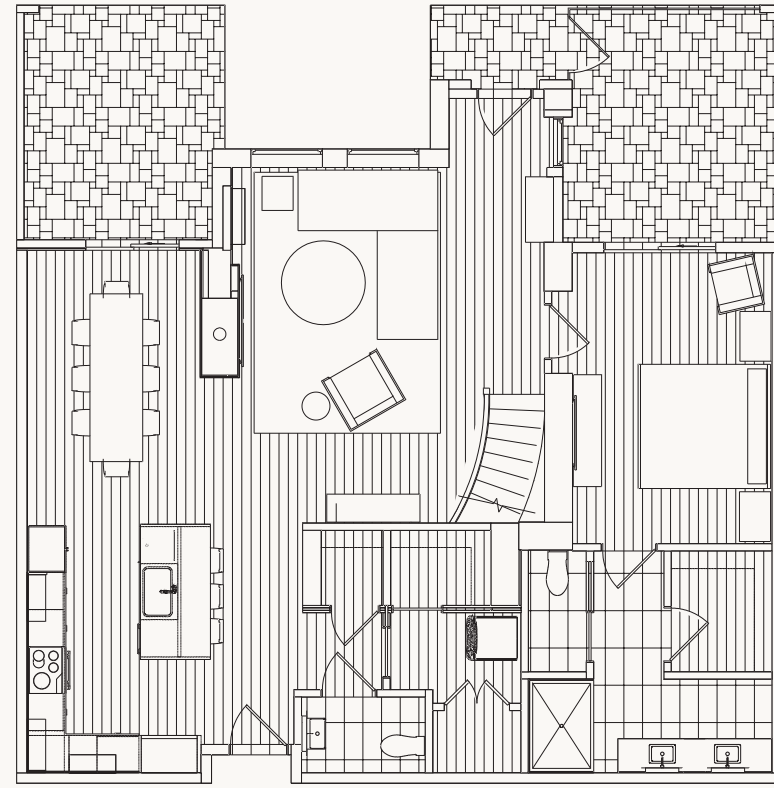


SECOND LEVEL

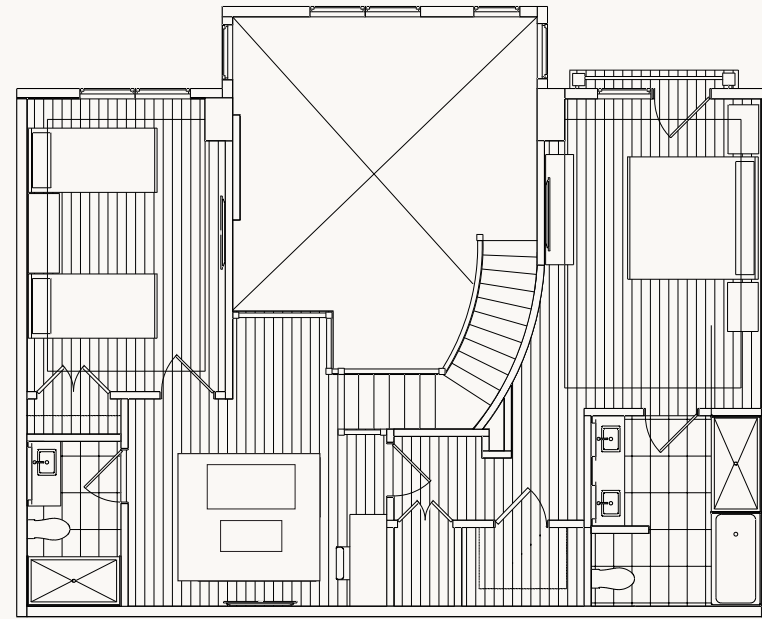


CALVI – FLOORPLAN TA REVERSE

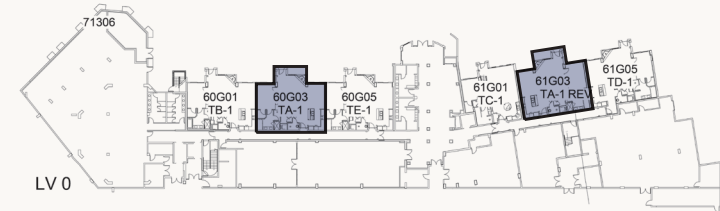
THREE BEDROOM | 2,052 SQUARE FEET



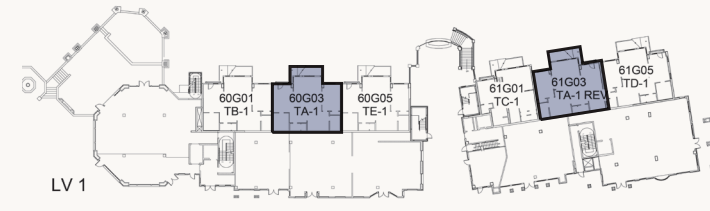
MAIN LEVEL



SECOND LEVEL



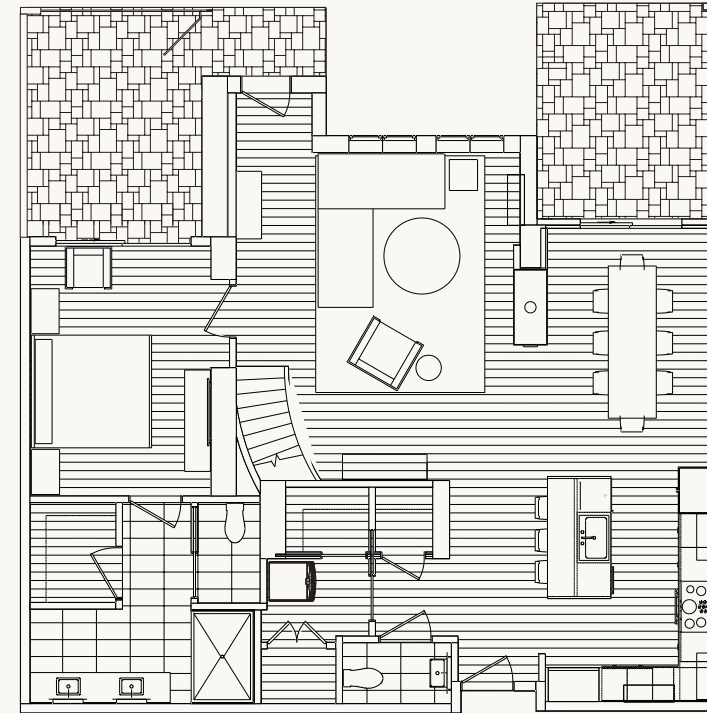
LV 0



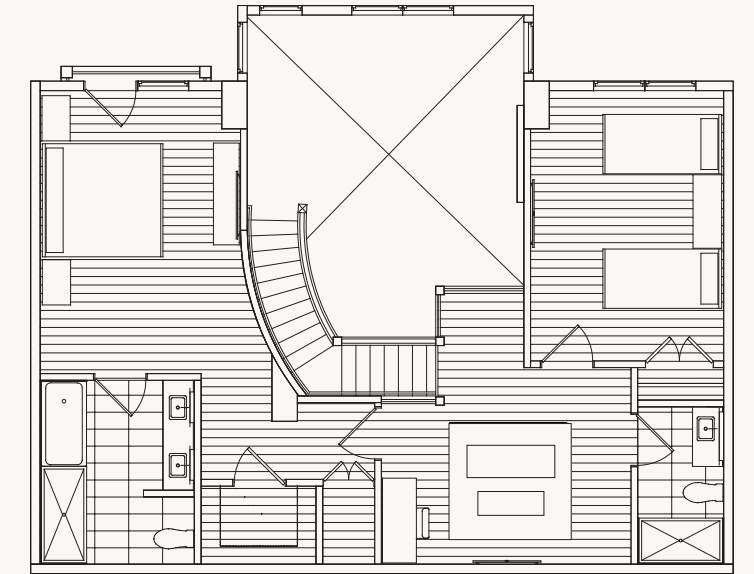
LV 1

CALVI – FLOORPLAN TB

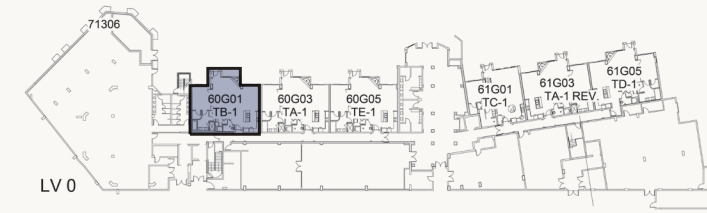
THREE BEDROOM WITH LOFT | 2,072 SQUARE FEET



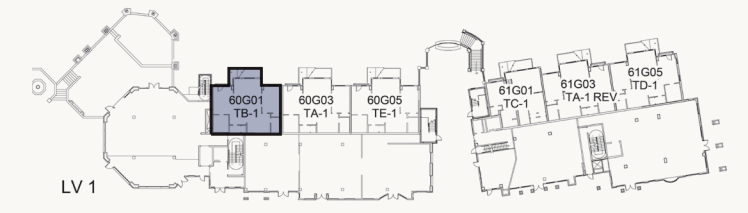
MAIN LEVEL



SECOND LEVEL

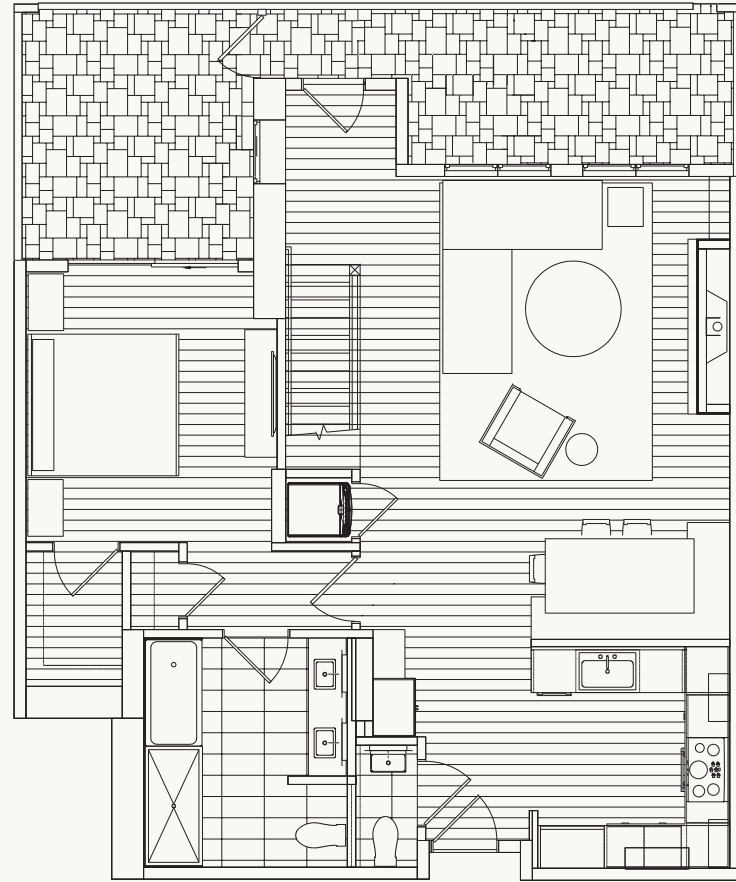


LV 0

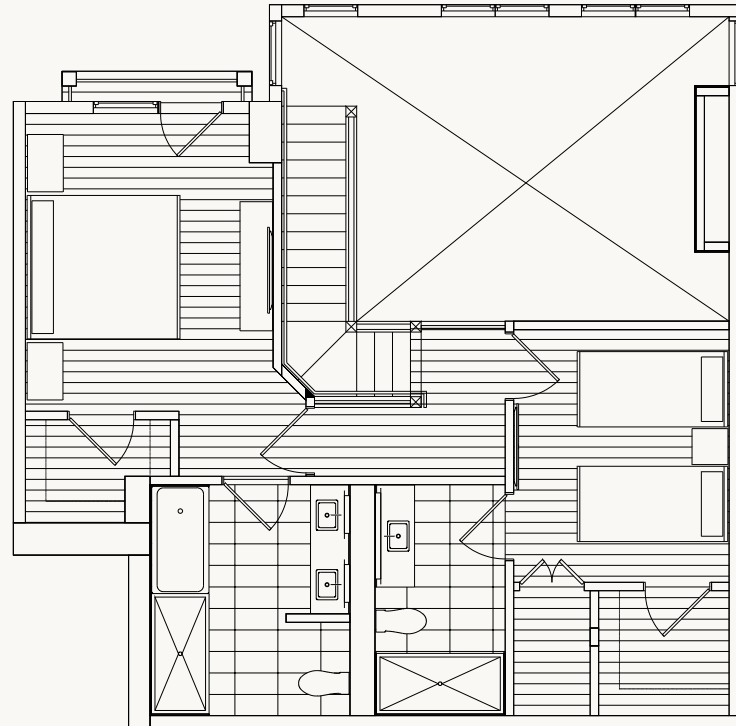


LV 1

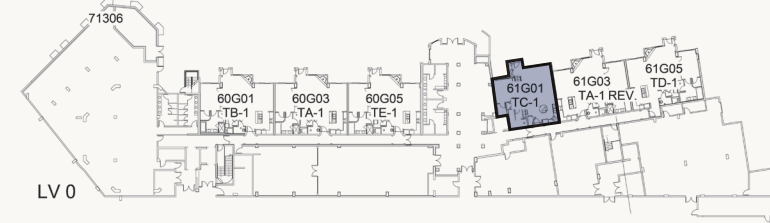
CALVI – FLOORPLAN TC
THREE BEDROOM | 1,577 SQUARE FEET



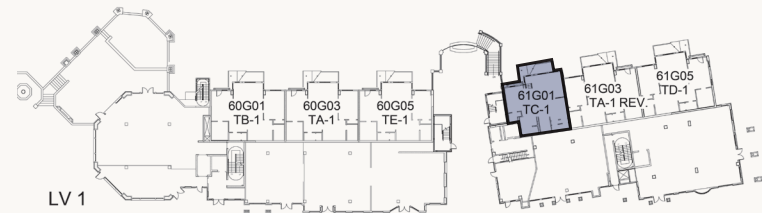
MAIN LEVEL



SECOND LEVEL

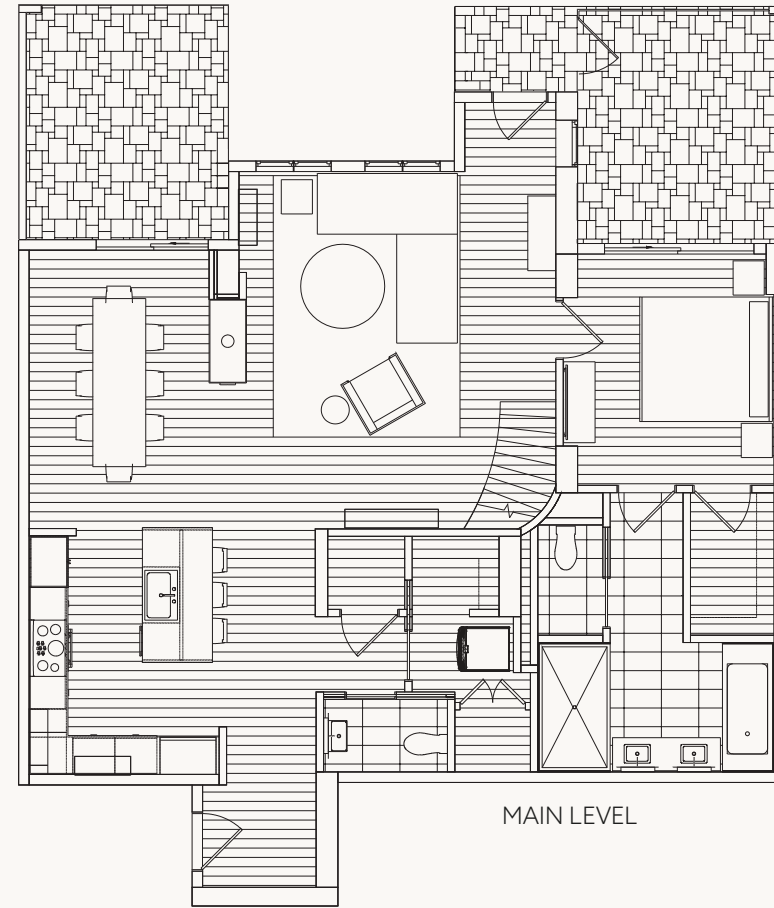


LV 0

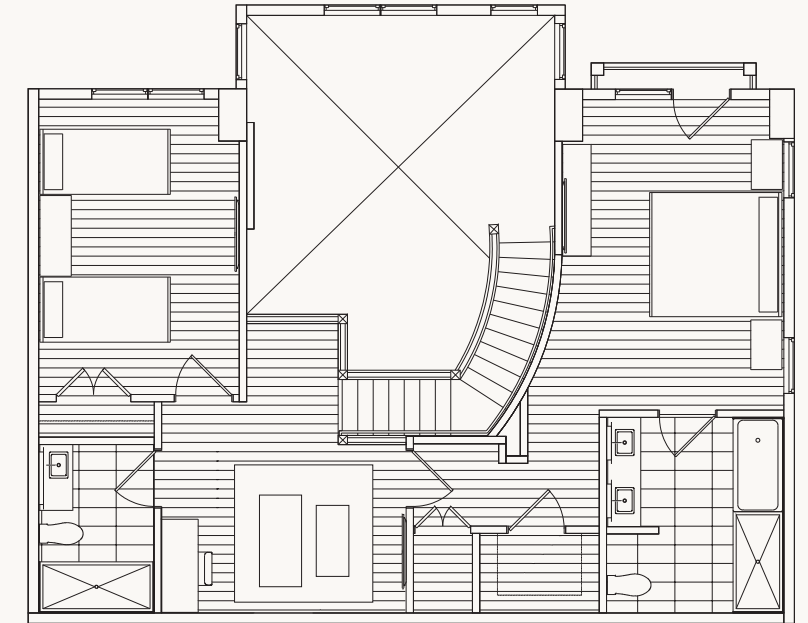


LV 1

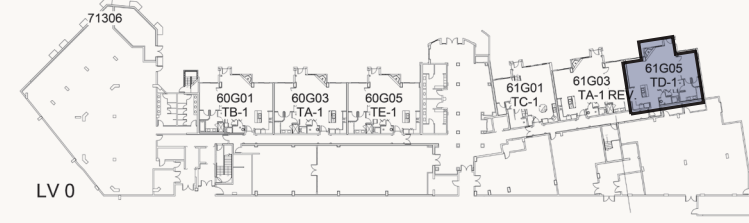
CALVI – FLOORPLAN TD
THREE BEDROOM WITH LOFT | 2,116 SQUARE FEET



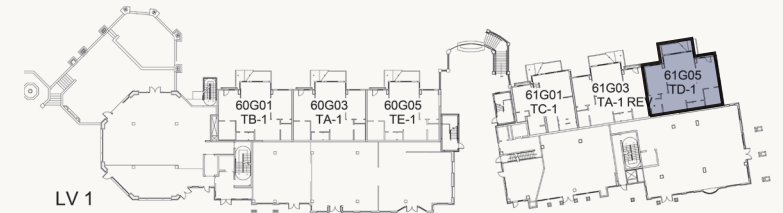
MAIN LEVEL



SECOND LEVEL

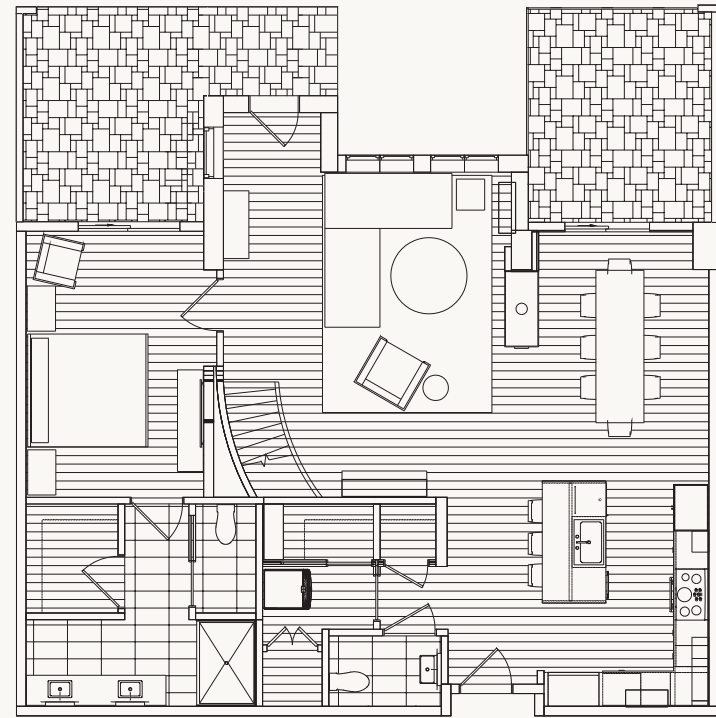


LV 0

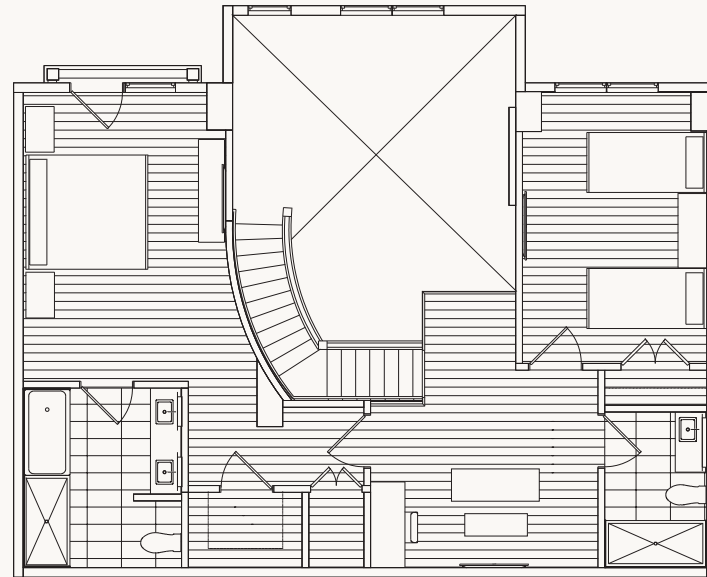


LV 1

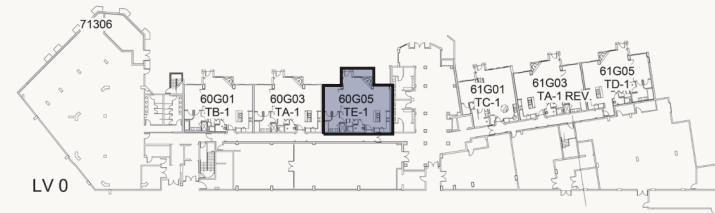
CALVI – FLOORPLAN TE
 THREE BEDROOM WITH LOFT | 2,047 SQUARE FEET



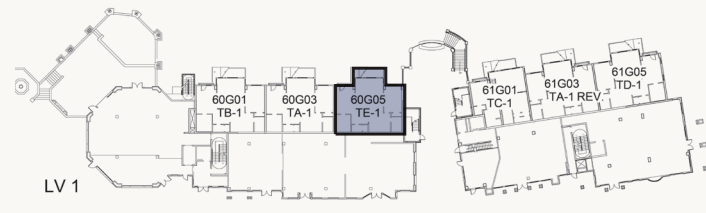
MAIN LEVEL



SECOND LEVEL

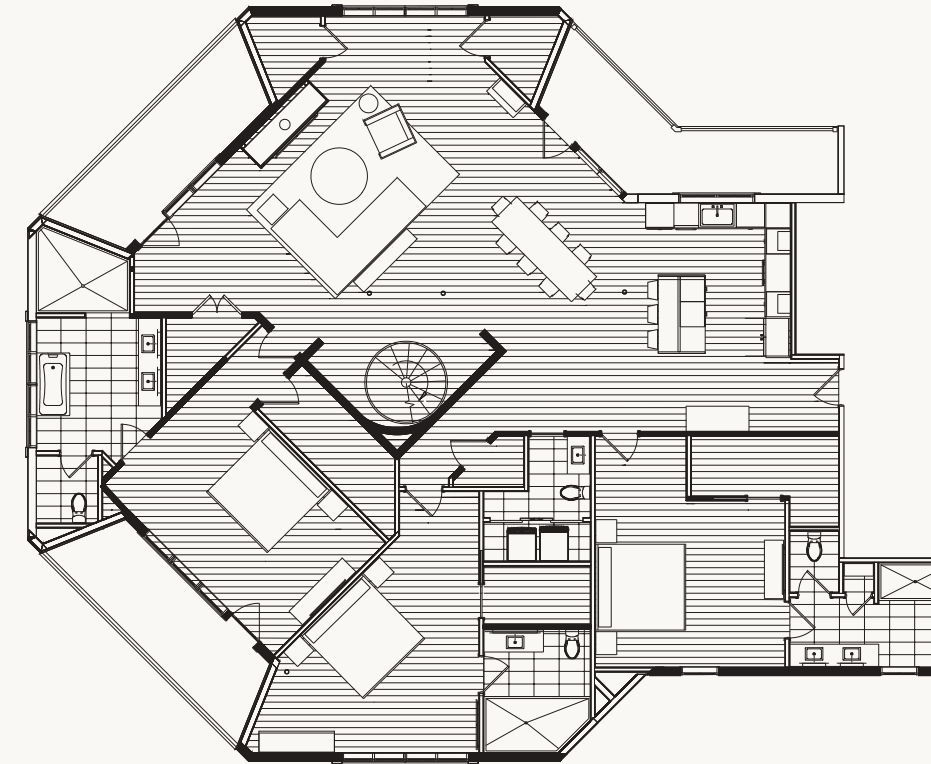


LV 0

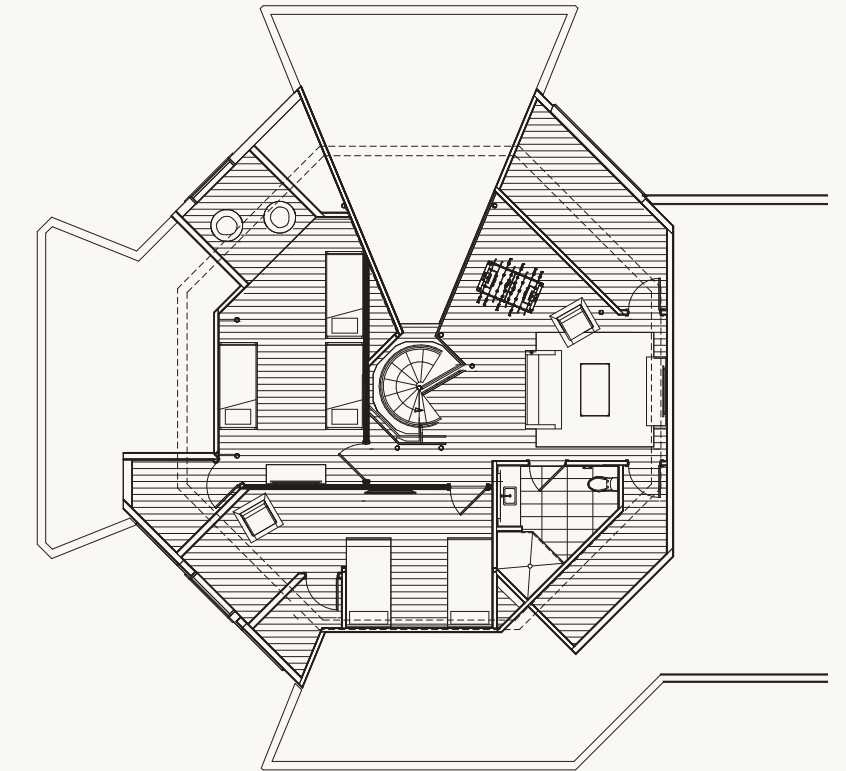


LV 1

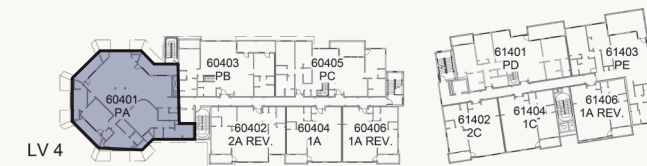
CALVI – FLOORPLAN PA
 FIVE BEDROOM | 4,000 SQUARE FEET



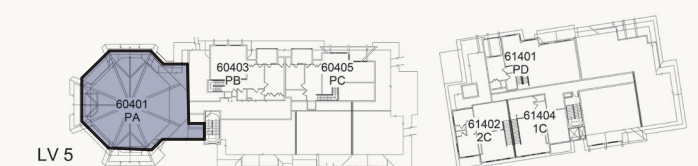
MAIN LEVEL



SECOND LEVEL

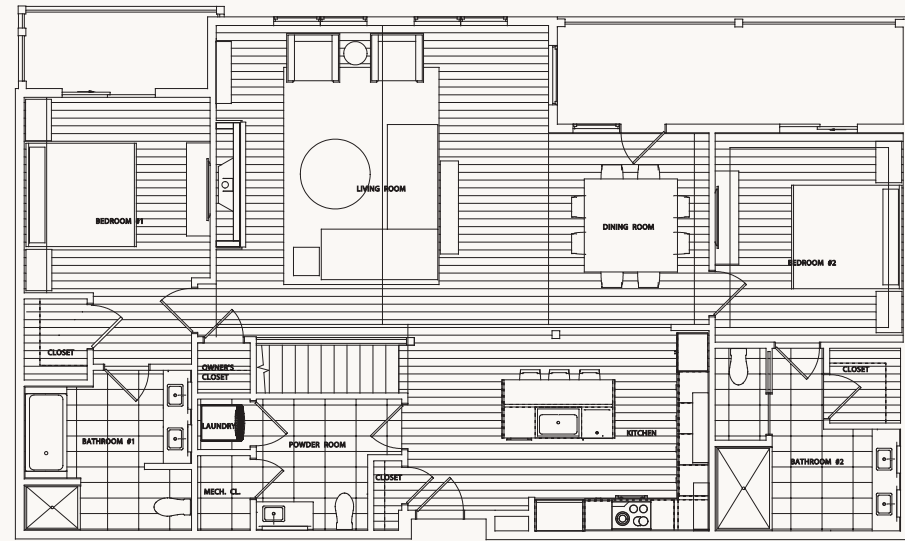


LV 4

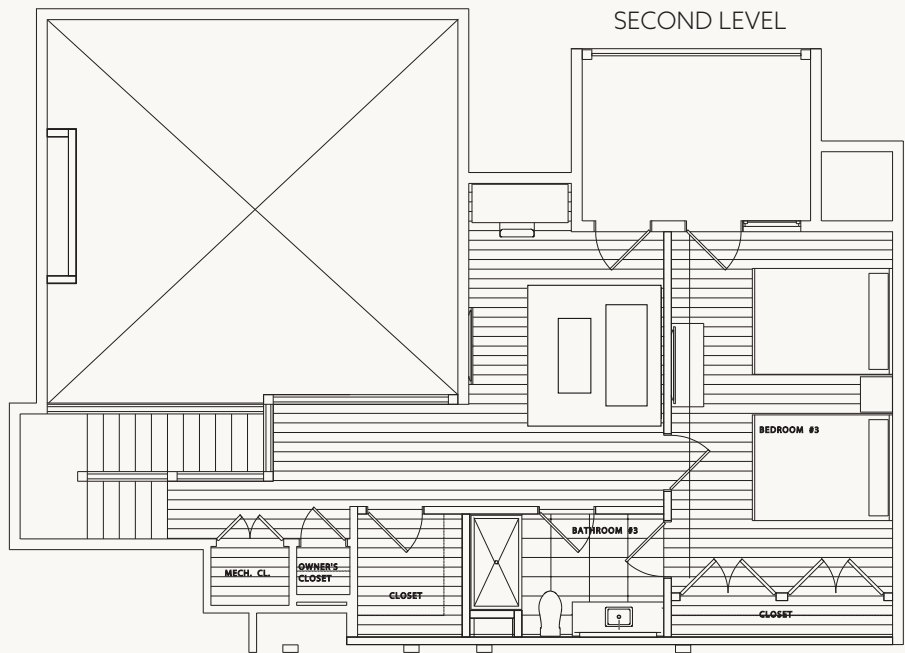


LV 5

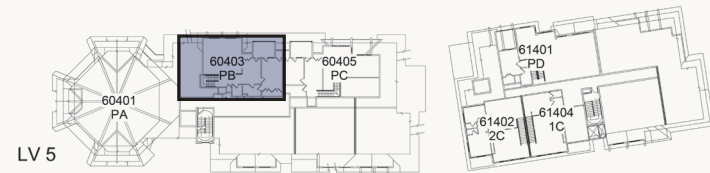
CALVI – FLOORPLAN PB
 THREE BEDROOM WITH LOFT | 2,262 SQUARE FEET



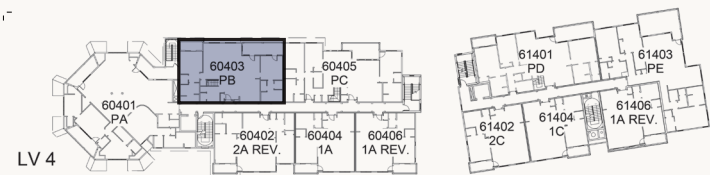
MAIN LEVEL



SECOND LEVEL

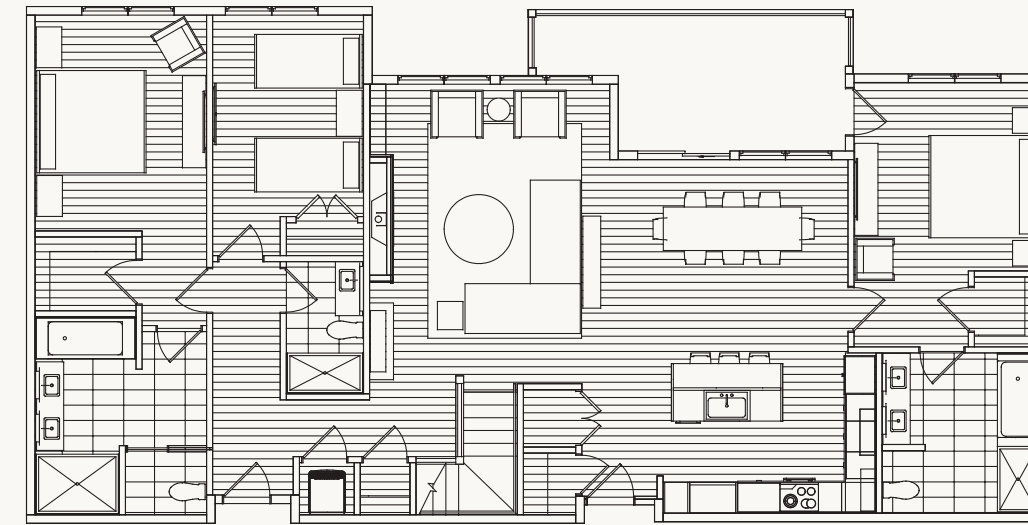


LV 5

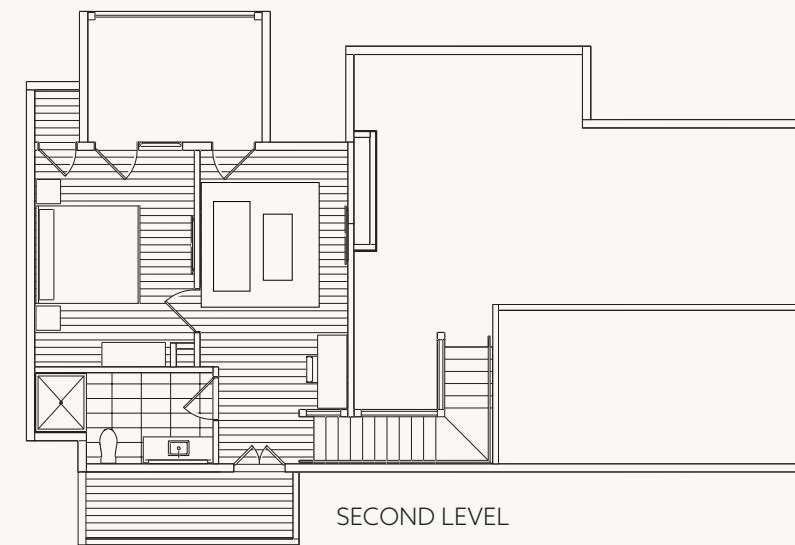


LV 4

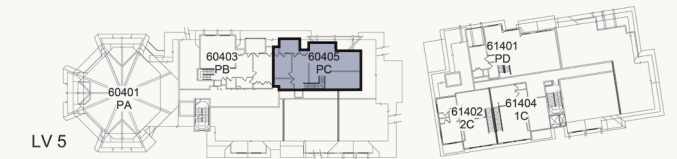
CALVI – FLOORPLAN PC
 THREE BEDROOM WITH LOFT | 2,362 SQUARE FEET



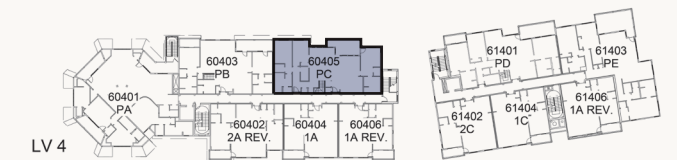
MAIN LEVEL



SECOND LEVEL

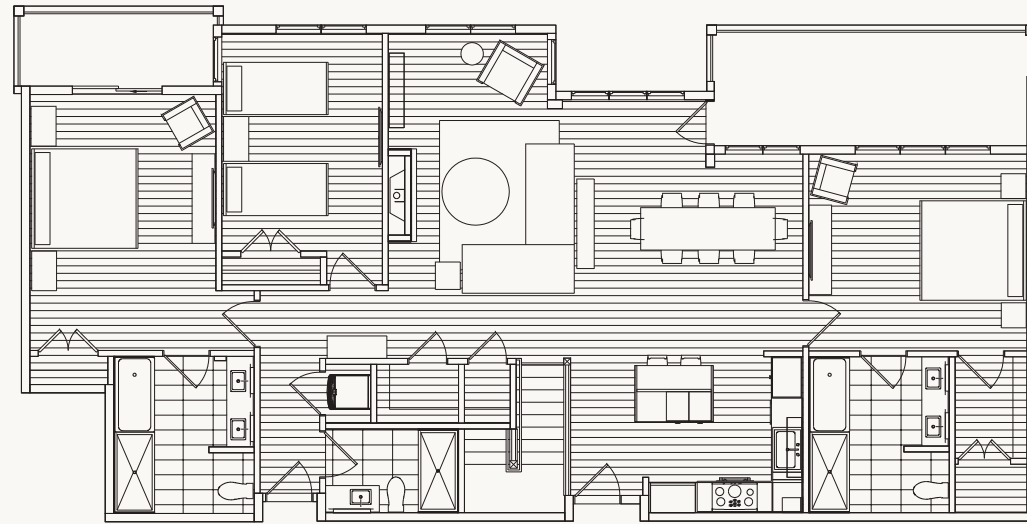


LV 5

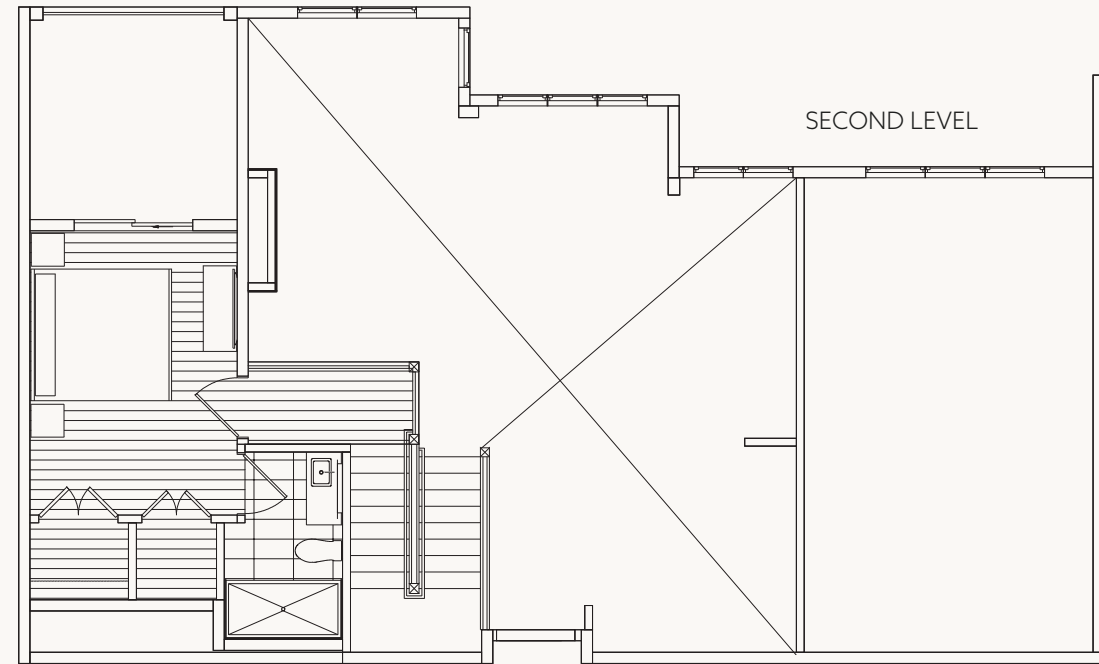


LV 4

CALVI – FLOORPLAN PD
FOUR BEDROOM | 2,124 SQUARE FEET



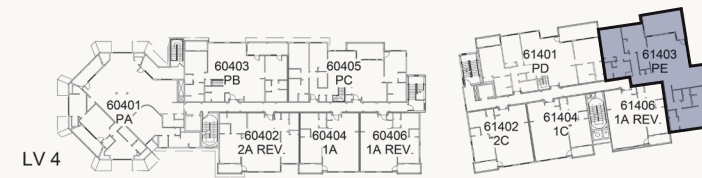
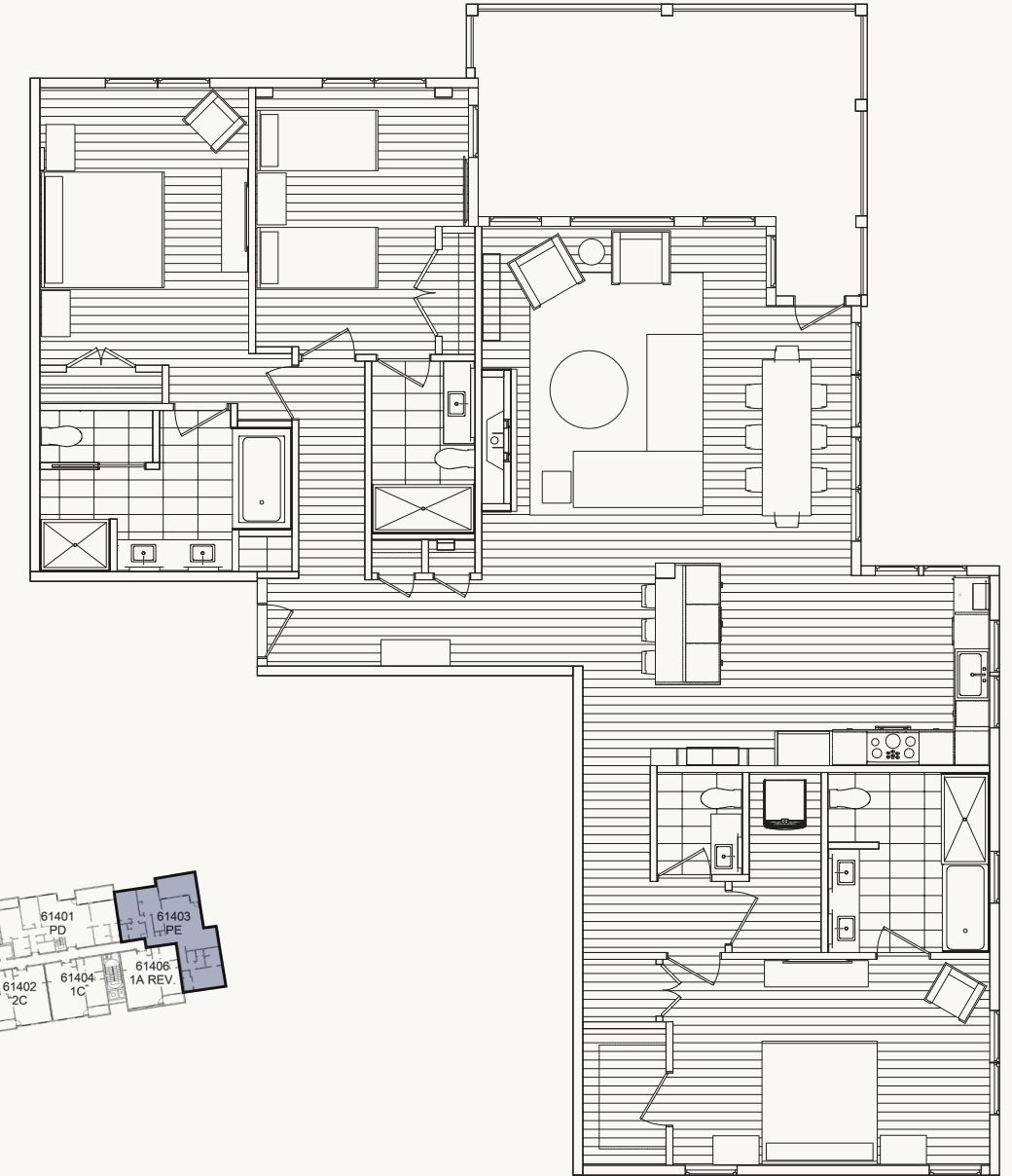
MAIN LEVEL



SECOND LEVEL



CALVI – FLOORPLAN PE
THREE BEDROOM | 2,010 SQUARE FEET





THE LUXURY OF

THOUGHTFUL INSPIRATION.

In designing Calvi's interiors, we thought through everything from elegant dinner parties to lazy Sunday afternoons, and provided every flourish and finish down to the last detail for you to truly enjoy your home here. Each residence within Calvi will be delivered completely turnkey and ready to be enjoyed from day one. Utilizing a Modern Rustic Elegance aesthetic as its inspiration, each Calvi home will feature:

NEUTRAL WARM TONES

MEDIUM TONE OAK FLOORING AND CABINETS

COZY FABRICS MIXED WITH RICH
LEATHERS AND HAIR ON HIDES

MODERN LIGHTING FIXTURES

IRON ACCENTS AND LIGHTING, HARDWARE, AND FURNITURE

CONTEMPORARY GAS FIREPLACES

COMPLETE DECOR PACKAGE

SPACIOUS, OPEN CONCEPT LIVING AREA

EUROPEAN, HAND DISTRESSED, WIDE PLANK
WHITE OAK FLOORING THROUGHOUT

FULL-SIZE KITCHEN WITH STAINLESS
STEEL THERMADOR APPLIANCES

FULLY APPOINTED KITCHENS

CUSTOM, WHITE OAK CABINETS

NATURAL STONE COUNTERTOPS THROUGHOUT

MINIMUM OF ONE PRIVATE DECK OR BALCONY

SOAKING TUB IN EVERY RESIDENCE

65" 4K TV IN LIVING ROOM

50" 4K TV IN BEDROOMS

HIGH-SPEED WIRELESS INTERNET

KEYLESS UNIT ENTRY

INDIVIDUAL HEATING AND AIR CONDITIONING CONTROLS

LUXURY LINEN PACKAGE

IN-UNIT WASHER AND DRYER

LIGHTED VANITY MIRROR AND HAIR
DRYER IN ALL BATHROOMS

WOOD HANGERS & LUGGAGE RACK IN EACH BEDROOM

DESIGNATED GARAGE PARKING SPACE IN
UNDERGROUND HEATED GARAGE

ADDITIONAL GEAR STORAGE OUTSIDE OF UNIT

AS SEEN IN

ARCHITECTURAL DIGEST MAGAZINE



THE VILLAGE AT TAMARACK RESORT AND CELEBRATED INTERIOR DESIGNER LAUREN WARBOY, FEATURED IN ARCHITECTURAL DIGEST MAGAZINE.

"It was very inspiring using the natural beauty of the mountain as a backdrop for the look and feel of the interiors. The design is best described as Mountain Rustic Elegance. While all the units share a similar aesthetic, we were able to dial in on each one and personalize them based on what the space was asking for. Hand distressed, European white oak flooring along with natural stone countertops and reclaimed wood accents showcase Calvi's rustic influence. Its elegance is on display with the soothing neutral tones of monochromatic leathers and fabrics. A mixture of textures - from leather to hair-on-hide, and hand-forged iron accents - completes the signature aesthetic for Calvi."

— LAUREN WARBOY





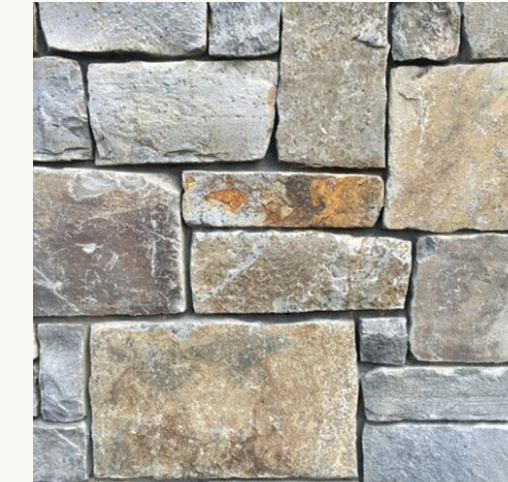
CALVI – FIXED FINISHES PALETTE



**FLOORING:
ENGINEERED WOOD**



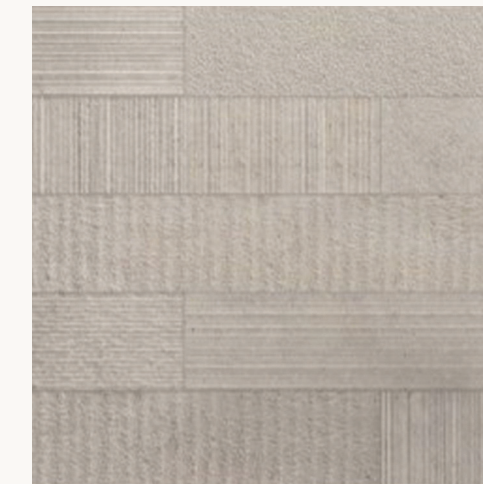
**KITCHEN COUNTERTOPS:
QUARTZITE GABANA**



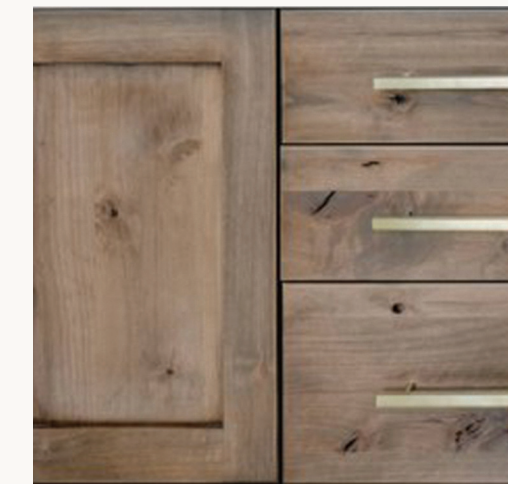
**FIREPLACE: STONE
WAPITI MOUNTAIN**



**MASTER BATHROOM
COUNTERTOP: QUARTZITE
FANTASY BROWN:
LEATHERED**



**MASTER BATHROOM
WALL TILE**



**CABINERY:
WHITE OAK**

All design selections are subject to change.

Artists renderings. All design selections are subject to change.

CALVI – FURNISHINGS



TABLETOP LIGHTING



SECTIONAL SOFA
LEATHER



BAR STOOL



CHANDELIER



LIVING ROOM TABLE
DISTRESSED RUSTIC WOOD



DINING ROOM TABLE



THROW PILLOW



BEDROOM DRESSER
DISTRESSED RUSTIC WOOD



WOOL AREA RUG

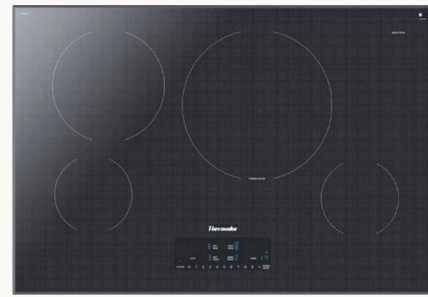
All design selections are subject to change.

All design selections are subject to change.

CALVI – EQUIPMENT



36" BUILT-IN REFRIGERATOR
THERMADOR



30" INDUCTION COOKTOP
THERMADOR



30" BUILT-IN OVEN
THERMADOR



WINE REFRIGERATOR
THERMADOR



24" MICRODRAWER
THERMADOR



DISHWASHER
THERMADOR



WASHER AND DRYER
GENERAL ELECTRIC

All design selections are subject to change.

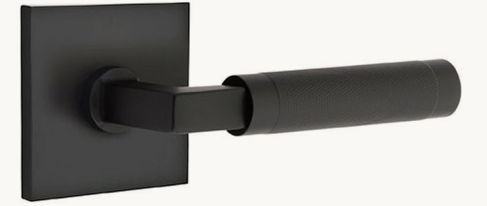
CALVI – FIXTURES



KITCHEN FAUCET
DELTA: STAINLESS STEEL



BATHROOM FAUCETS
MOEN: BRUSHED NICKEL



DOOR HANDLES
EMTEK: FLAT BLACK



CABINET HARDWARE
EMTEK: FLAT BLACK



SHOWER HEAD AND TUB FILLER
MOEN: BRUSHED NICKEL



KITCHEN SINK
BLANCO: PRECIS 30 - CINDER

All design selections are subject to change.

CALVI – SAMPLE ARTWORK



**SAMPLE ARTWORK: DINING ROOM
TAMARACK RESORT FINE ART PRINT**



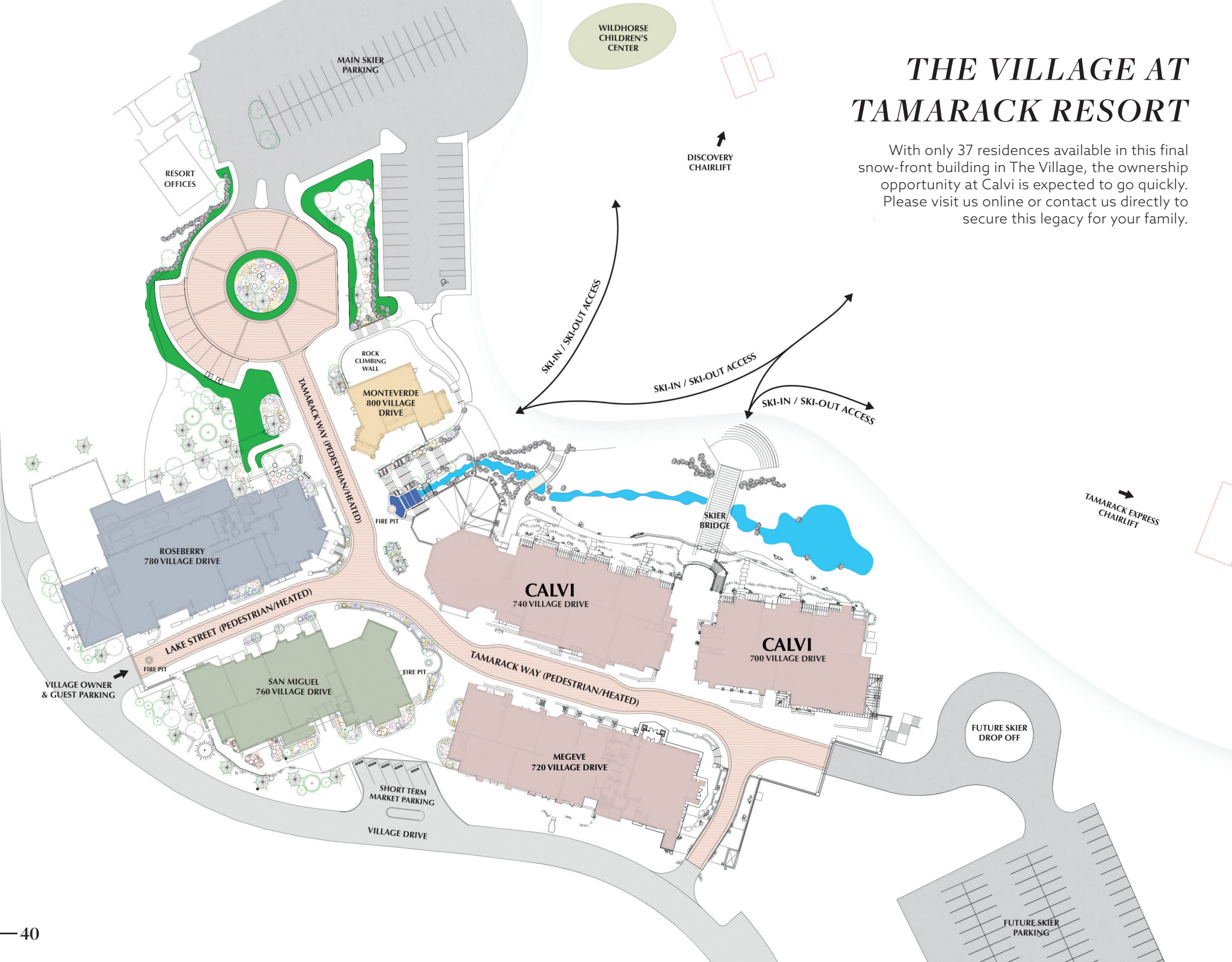
**SAMPLE ARTWORK: LIVING ROOM
TAMARACK RESORT FINE ART PRINT**



**SAMPLE ARTWORK: PRIMARY SUITE
TAMARACK RESORT FINE ART PRINT**

All design selections are subject to change.







CONTACT A REAL ESTATE AGENT TODAY

208.325.1001 | RealEstate@TamarackIdaho.com



WARNING: THE CALIFORNIA DEPARTMENT OF REAL ESTATE HAS NOT INSPECTED, EXAMINED, OR QUALIFIED THIS OFFERING. Terms and conditions may change without notice.