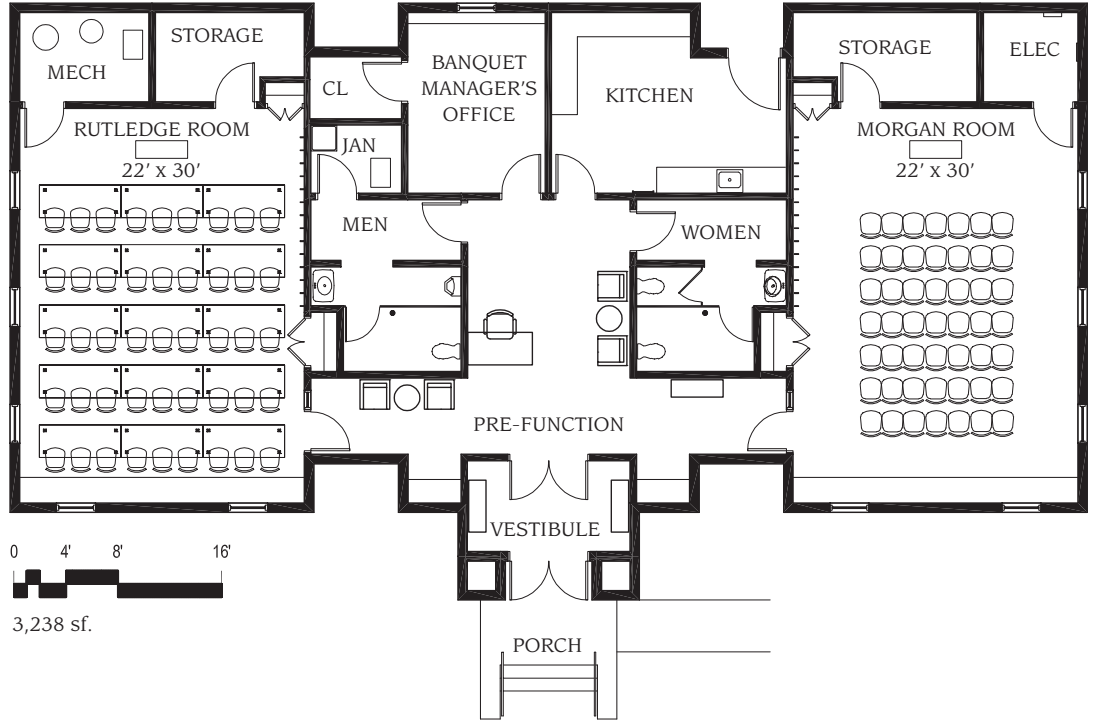


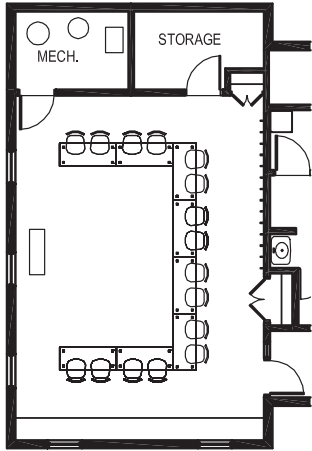
ARLING CENTER SCHOOLHOUSE

Rutledge Room = 660 sq. ft. | Morgan Room = 660 sq. ft.

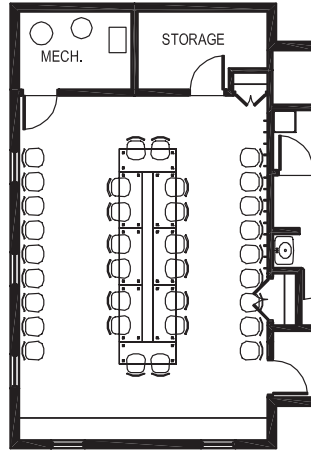
The maximum capacity each room/layout can accommodate excludes any additional items such as buffet tables, display tables, bars, dance floors, ect. that your party may need. Please consult with our Sales and Service Team to determine which room best suites your needs.



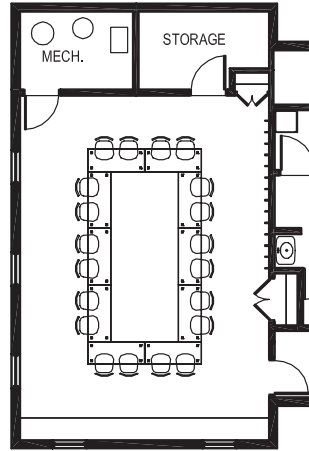
ALTERNATIVE ROOM LAYOUTS



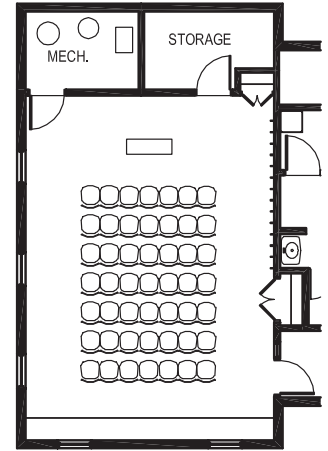
U-Shape Layout
16 Chairs—8 Tables



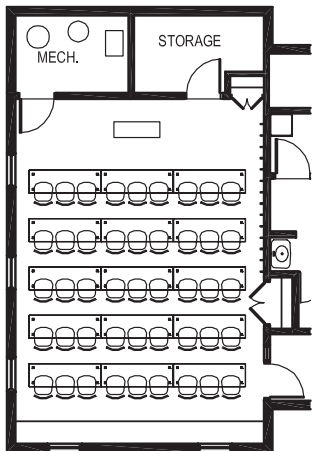
Boardroom Layout 1
16-34 Chairs—8 Tables



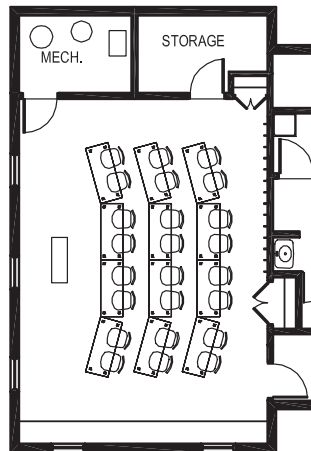
Boardroom Layout 2
20 Chairs—10 Tables



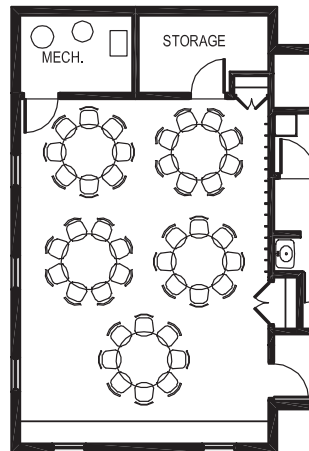
Lecture Layout
49 Chairs



Classroom Training Layout
45 Chairs—15 Tables



Crescent Training Layout
24 Chairs—13 Tables



Dining Layout
40 Chairs—5 Tables

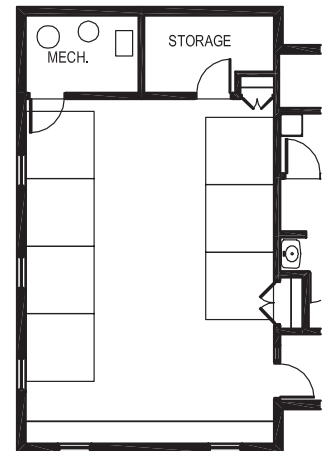
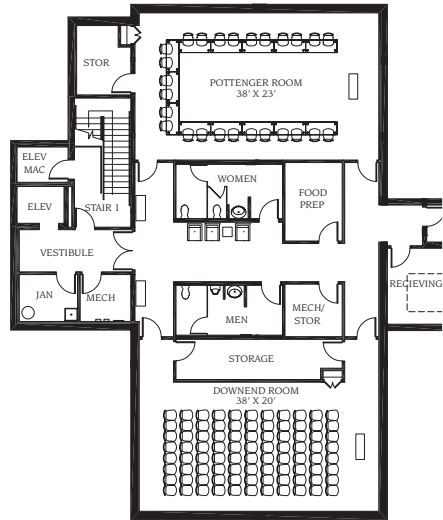


Exhibit Layout
Please ask your sales representative about options.

*Building code restricts occupant load to 49 people maximum based on single exit door.

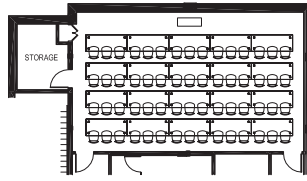
ARLING CENTER GRANGE

Lower Level = 1,600 sq. ft. | Upper Level = 2,496 sq. ft. | Total (both floors) = 2,496 sq. ft.

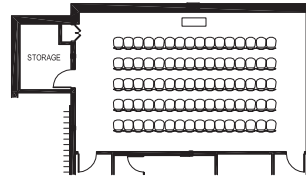


**ARLING CENTER GRANGE
LOWER LEVEL MEETING ROOMS**

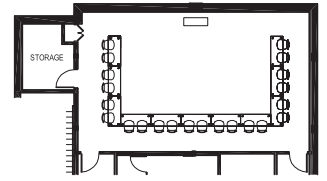
LOWER LEVEL—POTTENGER MEETING ROOM ALTERNATIVE LAYOUTS*



Classroom Training Layout
60 Chairs—20 Tables

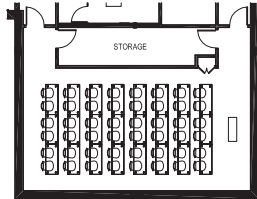


Lecture Layout 1
80 Chairs

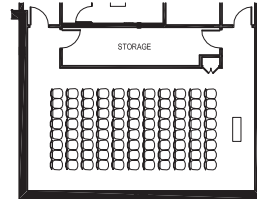


Boardroom Layout
22 Chairs—11 Tables

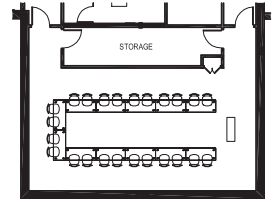
LOWER LEVEL—DOWNEND MEETING ROOM ALTERNATIVE LAYOUTS*



Classroom Training Layout
48 Chairs—24 Tables

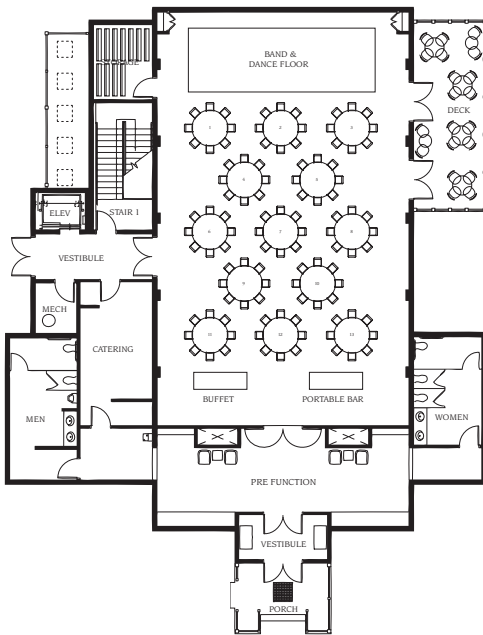


Lecture Layout 1
88 Chairs



Boardroom Layout
26-28 Chairs—12-14 Tables

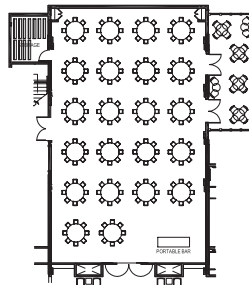
*All of the seating arrangements shown for the Schoolhouse are also available for the Pottinger & Downend Meeting Rooms in the lower level of the Grange. Please ask your sales representative for seating capacities.



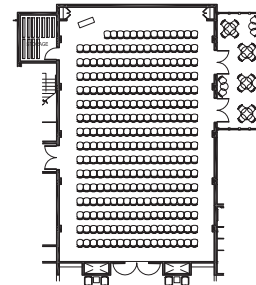
**ARLING CENTER GRANGE
UPPER LEVEL MEETING ROOMS**

Lower Level Meeting Space = 1,600 sq. ft.
Upper Level Meeting Space = 2,496 sq. ft.
Total Meeting Space Both Floors = 4,096 sq. ft.

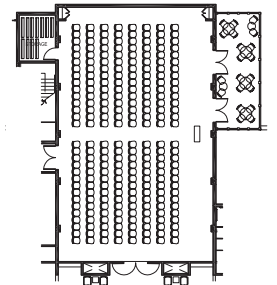
UPPER LEVEL - ASSEMBLY AREA ALTERNATIVE LAYOUTS



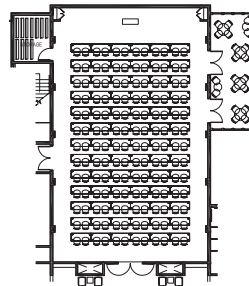
Dining Layout
176 Chairs, 22 Tables
Plus outdoor seating for 16, weather permitting



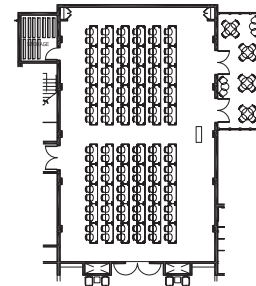
Lecture Layout
265 Chairs
Plus outdoor seating for 16, weather permitting



Lecture Layout 2
240 Chairs
Plus outdoor seating for 16, weather permitting



Classroom Training Layout 1
182 Chairs, 92 Tables
Plus outdoor seating for 16, weather permitting



Classroom Training Layout 2
144 Chairs, 73 Tables
Plus outdoor seating for 16, weather permitting

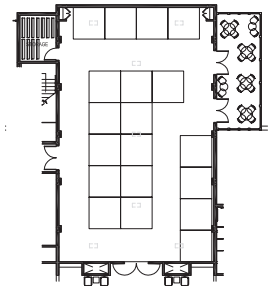


Exhibit Layout
Please ask your sales representative about options.

ARLING CENTER CHAPEL

Meeting Space = 1,189 sq. ft.
Seating for up to 125 people

